

For Research Use Only

KCNE2 Polyclonal antibody

Catalog Number: 17920-1-AP



Basic Information

Catalog Number:

17920-1-AP

Size:

150ul, Concentration: 500 ug/ml by Nanodrop;

Source:

Rabbit

Isotype:

IgG

Immunogen Catalog Number:

AG12336

GenBank Accession Number:

BC093892

GeneID (NCBI):

9992

UNIPROT ID:

Q9Y6J6

Full Name:

potassium voltage-gated channel, Isk-related family, member 2

Calculated MW:

123 aa, 14 kDa

Observed MW:

30 kDa

Purification Method:

Antigen affinity purification

Recommended Dilutions:

WB 1:500-1:3000

Applications

Tested Applications:

WB, ELISA

Species Specificity:

mouse, rat

Positive Controls:

WB: mouse kidney tissue, mouse pancreas tissue, rat kidney tissue

Background Information

Potassium voltage-gated channel subfamily E regulatory subunit 2 (KCNE2, also known as LQT5, LQT6, ATFB4, and MIRP1) functions as a regulatory subunit of the voltage-gated potassium (Kv) channel complex composed of pore-forming and potassium-conducting alpha subunits and of regulatory beta subunits (PMID: 10219239; 11034315; 11101505; 12185453; 20533308). KCNE2 beta subunit modulates the gating kinetics and enhances the stability of the channel complex (PMID: 10219239; 11034315; 11101505; 12185453; 20533308). It is expressed in various parts of the heart, with higher levels observed in the ventricles and Purkinje tissues compared to the atria (PMID: 39272981). KCNE2 has three forms, such as the core (15 kDa), singly glycosylated (20 kDa), and doubly glycosylated (25 kDa) forms (PMID: 15066947).

Storage

Storage:

Store at -20°C. Stable for one year after shipment.

Storage Buffer:

PBS with 0.02% sodium azide and 50% glycerol pH 7.3.

Aliquoting is unnecessary for -20°C storage

*** 20ul sizes contain 0.1% BSA

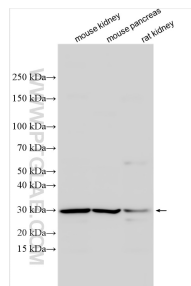
For technical support and original validation data for this product please contact:

T: 1 (888) 4PTGLAB (1-888-478-4522) (toll free in USA), or 1(312) 455-8498 (outside USA)

E: proteintech@ptglab.com
W: ptglab.com

This product is exclusively available under Proteintech Group brand and is not available to purchase from any other manufacturer.

Selected Validation Data



Various lysates were subjected to SDS PAGE followed by western blot with 17920-1-AP (KCNE2 antibody) at dilution of 1:1500 incubated at room temperature for 1.5 hours.