

SRY Polyclonal antibody

Catalog Number: 17930-1-AP

Basic Information

Catalog Number: 17930-1-AP	GenBank Accession Number: BC074924	Purification Method: Antigen affinity purification
Size: 150ul , Concentration: 500 µg/ml by Nanodrop and 340 µg/ml by Bradford method using BSA as the standard;	GeneID (NCBI): 6736	Recommended Dilutions: WB 1:500-1:1000 IHC 1:50-1:500
Source: Rabbit	UNIPROT ID: Q05066	
Isotype: IgG	Full Name: sex determining region Y	
Immunogen Catalog Number: AG12360	Calculated MW: 204 aa, 24 kDa	
	Observed MW: 30 kDa	

Applications

Tested Applications:
WB, IHC, ELISA

Species Specificity:
human, mouse

Note-IHC: suggested antigen retrieval with **TE buffer pH 9.0; (*)** Alternatively, antigen retrieval may be performed with **citrate buffer pH 6.0**

Positive Controls:

WB : human testis tissue,

IHC : mouse testis tissue, human testis tissue, human spleen tissue, human kidney tissue

Background Information

SRY (sex-determining region Y protein) is a transcriptional activator required for male sex determination in mammals. This protein, also referred to as testis-determining factor (TDF), is an HMG box protein that initiates the formation of testis from undifferentiated gonad. The DNA-binding activity of SRY is required for normal testis formation. This DNA-binding activity is thought to be regulated by PKA, which phosphorylates SRY in vivo. Mutations in SRY have been associated with 46,XY gonadal dysgenesis, in which the gonads fail to develop in XY phenotypic females.

Storage

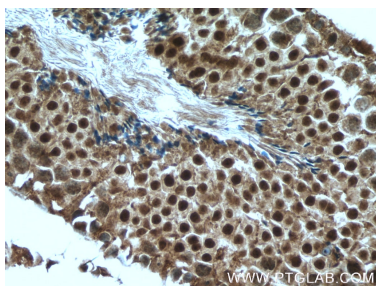
Storage:
Store at -20°C. Stable for one year after shipment.
Storage Buffer:
PBS with 0.02% sodium azide and 50% glycerol pH 7.3.
Aliquoting is unnecessary for -20°C storage

*** 20ul sizes contain 0.1% BSA

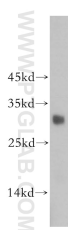
For technical support and original validation data for this product please contact:
T: 1 (888) 4PTGLAB (1-888-478-4522) (toll free in USA), or 1(312) 455-8498 (outside USA)
E: proteintech@ptglab.com
W: ptglab.com

This product is exclusively available under Proteintech Group brand and is not available to purchase from any other manufacturer.

Selected Validation Data



Immunohistochemical analysis of paraffin-embedded mouse testis tissue slide using 17930-1-AP (SRY antibody) at dilution of 1:200 (under 40x lens). Heat mediated antigen retrieval with Tris-EDTA buffer (pH 9.0).



human testis tissue were subjected to SDS PAGE followed by western blot with 17930-1-AP (SRY antibody) at dilution of 1:500 incubated at room temperature for 1.5 hours.