

For Research Use Only

# RPE65 Polyclonal antibody

Catalog Number: 17939-1-AP

Featured Product

14 Publications



## Basic Information

### Catalog Number:

17939-1-AP

### Size:

150ul, Concentration: 450 ug/ml by Nanodrop and 187 ug/ml by Bradford method using BSA as the standard;

### Source:

Rabbit

### Isotype:

IgG

### Immunogen Catalog Number:

AG12356

### GenBank Accession Number:

BC075036

### GeneID (NCBI):

6121

### UNIPROT ID:

Q16518

### Full Name:

retinal pigment epithelium-specific protein 65kDa

### Calculated MW:

61 kDa

### Observed MW:

65 kDa, 61 kDa

### Purification Method:

Antigen affinity purification

### Recommended Dilutions:

WB 1:500-1:3000

IHC 1:50-1:500

IF-P 1:50-1:500

IF-Fro 1:50-1:500

## Applications

### Tested Applications:

WB, IHC, IF-P, IF-Fro, ELISA

### Cited Applications:

WB, IHC, IF

### Species Specificity:

human, mouse, rat

### Cited Species:

human, mouse, rat, zebrafish

**Note-IHC: suggested antigen retrieval with TE buffer pH 9.0; (\*) Alternatively, antigen retrieval may be performed with citrate buffer pH 6.0**

### Positive Controls:

WB: Y79 cells, HeLa cells, PC-3 cells

IHC: mouse eye tissue,

IF-P: mouse eye tissue,

IF-Fro: mouse eye tissue,

## Background Information

RPE65(Retinal pigment epithelium-specific 65 kDa protein) is also named as retinoid isomerohydrolase with the calculated molecular weight of 61 kDa and belongs to the carotenoid oxygenase family. It is a microsomal protein with isomerase activity in the retinoid visual cycle that playing a role in the isomerisation of all-trans (vitamin A) to 11-cis retinal, the chromophore of the visual pigments. It also might be involved in retinoid uptake of keratinocytes.

## Notable Publications

Author	Pubmed ID	Journal	Application
Jianing Gu	31075513	Acta Biomater	WB
Caiying Liu	35325805	Redox Biol	WB
Lars Tebbe	35344225	FASEB J	IF

## Storage

### Storage:

Store at -20°C. Stable for one year after shipment.

### Storage Buffer:

PBS with 0.02% sodium azide and 50% glycerol, pH7.3

Aliquoting is unnecessary for -20°C storage

\*\*\* 20ul sizes contain 0.1% BSA

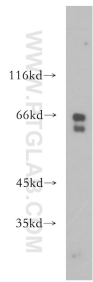
For technical support and original validation data for this product please contact:

T: 1 (888) 4PTGLAB (1-888-478-4522) (toll free in USA), or 1(312) 455-8498 (outside USA)

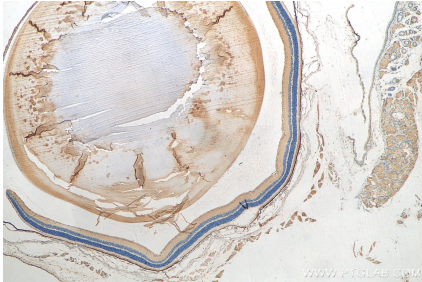
E: proteintech@ptglab.com  
W: ptglab.com

This product is exclusively available under Proteintech Group brand and is not available to purchase from any other manufacturer.

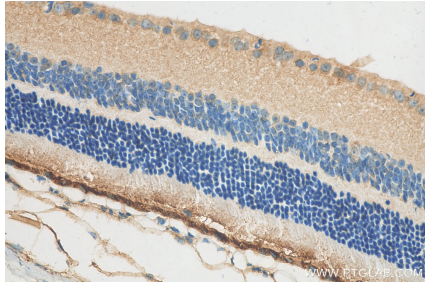
Selected Validation Data



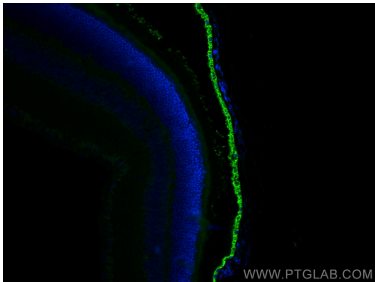
Y79 cells were subjected to SDS PAGE followed by western blot with 17939-1-AP (RPE65 antibody) at dilution of 1:600 incubated at room temperature for 1.5 hours.



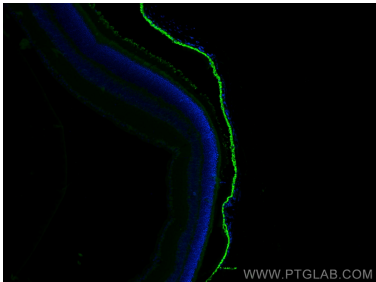
Immunohistochemical analysis of paraffin-embedded mouse eye tissue slide using 17939-1-AP (RPE65 antibody) at dilution of 1:200 (under 4x lens). Heat mediated antigen retrieval with Tris-EDTA buffer (pH 9.0).



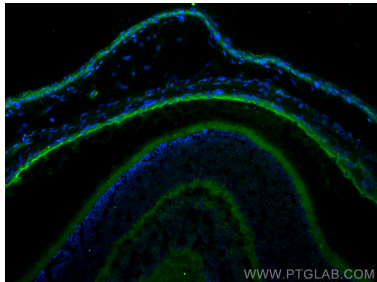
Immunohistochemical analysis of paraffin-embedded mouse eye tissue slide using 17939-1-AP (RPE65 antibody) at dilution of 1:200 (under 40x lens). Heat mediated antigen retrieval with Tris-EDTA buffer (pH 9.0).



Immunofluorescent analysis of (4% PFA) fixed mouse eye tissue using RPE65 antibody (17939-1-AP) at dilution of 1:200 and CoraLite®488-Conjugated AffiniPure Goat Anti-Rabbit IgG(H+L).



Immunofluorescent analysis of (4% PFA) fixed mouse eye tissue using RPE65 antibody (17939-1-AP) at dilution of 1:200 and CoraLite®488-Conjugated AffiniPure Goat Anti-Rabbit IgG(H+L).



Immunofluorescent analysis of (4% PFA) fixed frozen OCT-embedded mouse eye tissue using RPE65 antibody (17939-1-AP) at dilution of 1:200 and Multi-rAb CoraLite ® Plus 488-Goat Anti-Rabbit Recombinant Secondary Antibody (H+L) (RGAR002).