

For Research Use Only

# HFE Polyclonal antibody, PBS Only

Catalog Number:17954-1-PBS



## Basic Information

**Catalog Number:**

17954-1-PBS

**Size:**

100ug , Concentration: 1 mg/ml by Nanodrop;

**Source:**

Rabbit

**Isotype:**

IgG

**Immunogen Catalog Number:**

AG12448

**GenBank Accession Number:**

BC074721

**GeneID (NCBI):**

3077

**UNIPROT ID:**

Q30201

**Full Name:**

hemochromatosis

**Calculated MW:**

345 aa, 40 kDa

**Observed MW:**

45-58 kDa

**Purification Method:**

Antigen affinity purification

## Applications

**Tested Applications:**

WB, Indirect ELISA

**Species Specificity:**

human

## Background Information

HFE is an important iron metabolism regulatory protein, which regulates the production of hepcidin through interactions with other proteins such as transferrin receptor 1 (TfR1) and TfR2. HFE is the most common pathogenic gene for hereditary hemochromatosis, which is a hereditary disease of iron accumulation in multiple organs caused by mutations in genes regulating iron metabolism.

## Storage

**Storage:**

Store at -80°C.

**Storage Buffer:**

PBS only, pH7.3

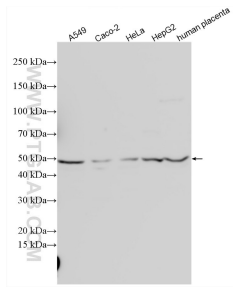
For technical support and original validation data for this product please contact:

T: 1 (888) 4PTGLAB (1-888-478-4522) (toll free in USA), or 1(312) 455-8498 (outside USA)

E: [proteintech@ptglab.com](mailto:proteintech@ptglab.com)  
W: [ptglab.com](http://ptglab.com)

**This product is exclusively available under Proteintech Group brand and is not available to purchase from any other manufacturer.**

## Selected Validation Data



Various lysates were subjected to SDS PAGE followed by western blot with 17954-1-AP (HFE antibody) at dilution of 1:1000 incubated at room temperature for 1.5 hours. This data was developed using the same antibody clone with 17954-1-PBS in a different storage buffer formulation.