

For Research Use Only

SRR Polyclonal antibody

Catalog Number: 17955-1-AP **1 Publications**



Basic Information

Catalog Number: 17955-1-AP	GenBank Accession Number: BC074728	Purification Method: Antigen affinity purification
Size: 150ul , Concentration: 600 µg/ml by Nanodrop;	GeneID (NCBI): 63826	Recommended Dilutions: WB 1:500-1:2000 IP 0.5-4.0 ug for IP and 1:500-1:1000 for WB
Source: Rabbit	Full Name: serine racemase	IHC 1:20-1:200
Isotype: IgG	Calculated MW: 340 aa, 37 kDa	
Immunogen Catalog Number: AG12449	Observed MW: 37 kDa	

Applications

Tested Applications: IHC, IP, WB, ELISA	Positive Controls:
Cited Applications: WB	WB : mouse brain tissue, rat brain tissue
Species Specificity: human, mouse, rat	IP : mouse brain tissue,
Cited Species: mouse	IHC : human kidney tissue, human heart tissue
Note-IHC: suggested antigen retrieval with TE buffer pH 9.0; (*) Alternatively, antigen retrieval may be performed with citrate buffer pH 6.0	

Background Information

SRR (serine racemase) is a 37 kDa protein and belongs to the serine/threonine dehydratase family. It plays a role in neuronal activity and a potential biological role in the regulation of N-methyl-D-aspartate (NMDA) receptor activity in these peripheral organs as well. SRR catalyzes the racemization between l- and d-serine.

Notable Publications

Author	Pubmed ID	Journal	Application
Matthew P Baier	35760531	J Neurosci	WB

Storage

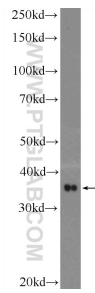
Storage:
Store at -20°C. Stable for one year after shipment.
Storage Buffer:
PBS with 0.02% sodium azide and 50% glycerol pH 7.3.
Aliquoting is unnecessary for -20°C storage

*** 20ul sizes contain 0.1% BSA

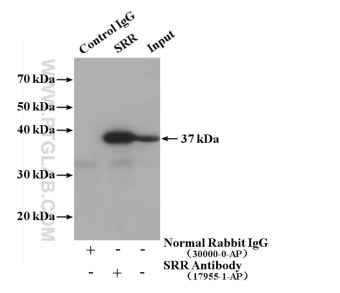
For technical support and original validation data for this product please contact:
T: 1 (888) 4PTGLAB (1-888-478-4522) (toll free in USA), or 1(312) 455-8498 (outside USA) E: proteintech@ptglab.com W: ptglab.com

This product is exclusively available under Proteintech Group brand and is not available to purchase from any other manufacturer.

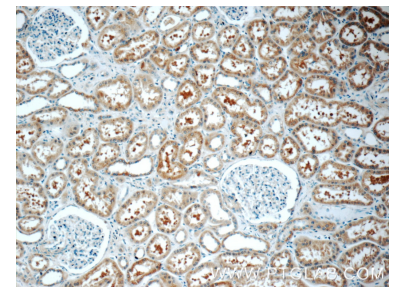
Selected Validation Data



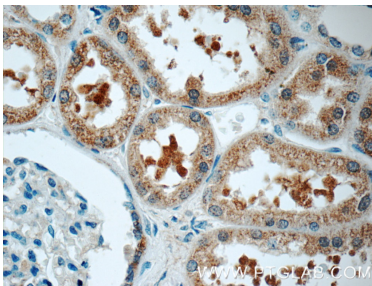
mouse brain tissue were subjected to SDS PAGE followed by western blot with 17955-1-AP (SRR Antibody) at dilution of 1:1000 incubated at room temperature for 1.5 hours.



IP result of anti-SRR (IP:17955-1-AP, 4ug; Detection:17955-1-AP 1:600) with mouse brain tissue lysate 4000 ug.



Immunohistochemical analysis of paraffin-embedded human kidney tissue slide using 17955-1-AP (SRR Antibody) at dilution of 1:50 (under 10x lens).



Immunohistochemical analysis of paraffin-embedded human kidney tissue slide using 17955-1-AP (SRR Antibody) at dilution of 1:50 (under 40x lens).