

For Research Use Only

# GTF2H2C Polyclonal antibody

Catalog Number: 17959-1-AP



## Basic Information

### Catalog Number:

17959-1-AP

### Size:

150ul , Concentration: 500 ug/ml by Nanodrop and 300 ug/ml by Bradford method using BSA as the standard;

### Source:

Rabbit

### Isotype:

IgG

### Immunogen Catalog Number:

AG12498

### GenBank Accession Number:

BC105980

### GeneID (NCBI):

728340

### UNIPROT ID:

Q6P1K8

### Full Name:

general transcription factor IIH, polypeptide 2C

### Calculated MW:

395 aa, 44 kDa

### Observed MW:

44 kDa

### Purification Method:

Antigen affinity purification

### Recommended Dilutions:

WB 1:1000-1:4000

IP 0.5-4.0 ug for 1.0-3.0 mg of total protein lysate

## Applications

### Tested Applications:

WB, IP, ELISA

### Species Specificity:

human, mouse, rat

### Positive Controls:

WB : L02 cells, HepG2 cells, HeLa cells, MCF-7 cells, K-562 cells, mouse liver tissue, rat liver tissue

IP : HepG2 cells,

## Storage

### Storage:

Store at -20°C. Stable for one year after shipment.

### Storage Buffer:

PBS with 0.02% sodium azide and 50% glycerol pH 7.3.

Aliquoting is unnecessary for -20°C storage

\*\*\* 20ul sizes contain 0.1% BSA

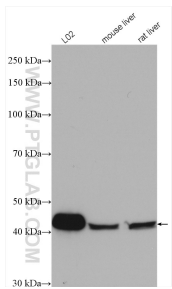
For technical support and original validation data for this product please contact:

T: 1 (888) 4PTGLAB (1-888-478-4522) (toll free in USA), or 1(312) 455-8498 (outside USA)

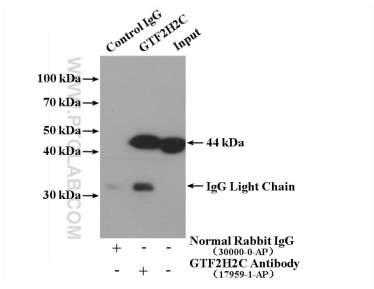
E: [proteintech@ptglab.com](mailto:proteintech@ptglab.com)  
W: [ptglab.com](http://ptglab.com)

This product is exclusively available under Proteintech Group brand and is not available to purchase from any other manufacturer.

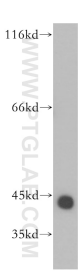
Selected Validation Data



Various lysates were subjected to SDS PAGE followed by western blot with 17959-1-AP (GTF2H2C antibody) at dilution of 1:2000 incubated at room temperature for 1.5 hours.



IP result of anti-GTF2H2C (IP:17959-1-AP, 4ug; Detection:17959-1-AP 1:500) with HepG2 cells lysate 2240 ug.



HepG2 cells were subjected to SDS PAGE followed by western blot with 17959-1-AP (GTF2H2C antibody) at dilution of 1:500 incubated at room temperature for 1.5 hours.