

For Research Use Only

BPHL Polyclonal antibody

Catalog Number: 17974-1-AP



Basic Information

Catalog Number: 17974-1-AP	GenBank Accession Number: BC037778	Purification Method: Antigen affinity purification
Size: 150ul , Concentration: 500 µg/ml by Nanodrop and 240 µg/ml by Bradford method using BSA as the standard;	GeneID (NCBI): 670	Recommended Dilutions: WB 1:500-1:2000 IHC 1:20-1:200
Source: Rabbit	Full Name: biphenyl hydrolase-like (serine hydrolase)	
Isotype: IgG	Calculated MW: 22 kDa, 32 kDa	
Immunogen Catalog Number: AG12085	Observed MW: 27 kDa	

Applications

Tested Applications:

IHC, WB, ELISA

Species Specificity:

human, mouse, rat

Note-IHC: suggested antigen retrieval with TE buffer pH 9.0; (*) Alternatively, antigen retrieval may be performed with citrate buffer pH 6.0

Positive Controls:

WB: human kidney tissue, human liver tissue, MCF-7 cells, mouse kidney tissue

IHC: human kidney tissue, human heart tissue, human lung tissue, human ovary tissue, human placenta tissue

Background Information

Storage

Storage:

Store at -20°C. Stable for one year after shipment.

Storage Buffer:

PBS with 0.02% sodium azide and 50% glycerol pH 7.3.

Aliquoting is unnecessary for -20°C storage

*** 20ul sizes contain 0.1% BSA

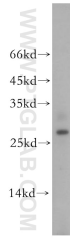
For technical support and original validation data for this product please contact:

T: 1 (888) 4PTGLAB (1-888-478-4522) (toll free in USA), or 1(312) 455-8498 (outside USA)

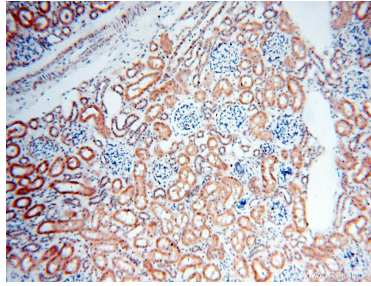
E: proteintech@ptglab.com
W: ptglab.com

This product is exclusively available under Proteintech Group brand and is not available to purchase from any other manufacturer.

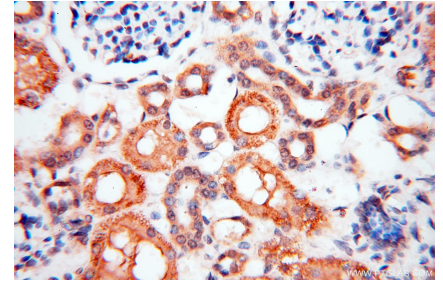
Selected Validation Data



human kidney tissue were subjected to SDS PAGE followed by western blot with 17974-1-AP (BPHL antibody) at dilution of 1:500 incubated at room temperature for 1.5 hours.



Immunohistochemical analysis of paraffin-embedded human kidney using 17974-1-AP (BPHL antibody) at dilution of 1:100 (under 10x lens).



Immunohistochemical analysis of paraffin-embedded human kidney using 17974-1-AP (BPHL antibody) at dilution of 1:100 (under 40x lens).