

For Research Use Only

# Cdc7 Kinase Polyclonal antibody

Catalog Number: 17980-1-AP

Featured Product

2 Publications



## Basic Information

### Catalog Number:

17980-1-AP

### Size:

150ul, Concentration: 350 ug/ml by Nanodrop and 253 ug/ml by Bradford method using BSA as the standard;

### Source:

Rabbit

### Isotype:

IgG

### Immunogen Catalog Number:

AG12384

### GenBank Accession Number:

BC111044

### GeneID (NCBI):

8317

### UNIPROT ID:

O00311

### Full Name:

cell division cycle 7 homolog (S. cerevisiae)

### Calculated MW:

574 aa, 64 kDa

### Observed MW:

64 kDa

### Purification Method:

Antigen affinity purification

### Recommended Dilutions:

WB 1:500-1:2000

IF/ICC 1:10-1:100

## Applications

### Tested Applications:

WB, IF/ICC, ELISA

### Cited Applications:

WB

### Species Specificity:

human, mouse, rat

### Cited Species:

human

### Positive Controls:

WB : SH-SY5Y cells, HeLa cells

IF/ICC : HepG2 cells,

## Notable Publications

Author	Pubmed ID	Journal	Application
Yiming He	33931584	Cell Death Dis	WB
Ling Deng	36725843	Cell Death Discov	WB

## Storage

### Storage:

Store at -20°C. Stable for one year after shipment.

### Storage Buffer:

PBS with 0.02% sodium azide and 50% glycerol pH 7.3.

Aliquoting is unnecessary for -20°C storage

\*\*\* 20ul sizes contain 0.1% BSA

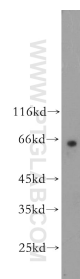
For technical support and original validation data for this product please contact:

T: 1 (888) 4PTGLAB (1-888-478-4522) (toll free in USA), or 1(312) 455-8498 (outside USA)

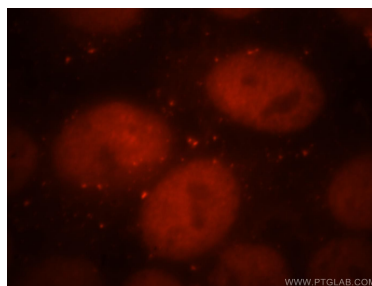
E: [proteintech@ptglab.com](mailto:proteintech@ptglab.com)  
W: [ptglab.com](http://ptglab.com)

This product is exclusively available under Proteintech Group brand and is not available to purchase from any other manufacturer.

## Selected Validation Data



SH-SY5Y cells were subjected to SDS PAGE followed by western blot with 17980-1-AP (Cdc7 Kinase antibody) at dilution of 1:500 incubated at room temperature for 1.5 hours.



Immunofluorescent analysis of HepG2 cells, using CDC7 antibody 17980-1-AP at 1:25 dilution and Rhodamine-labeled goat anti-rabbit IgG (red).