

For Research Use Only

# HINT2 Polyclonal antibody, PBS Only

Catalog Number: 17986-1-PBS

Featured Product



## Basic Information

**Catalog Number:**

17986-1-PBS

**Size:**

100ug, Concentration: 1 mg/ml by Nanodrop;

**Source:**

Rabbit

**Isotype:**

IgG

**Immunogen Catalog Number:**

AG12413

**GenBank Accession Number:**

BC047737

**GeneID (NCBI):**

84681

**UNIPROT ID:**

Q9BX68

**Full Name:**

histidine triad nucleotide binding protein 2

**Calculated MW:**

163 aa, 17 kDa

**Observed MW:**

~17 kDa

**Purification Method:**

Antigen affinity purification

## Applications

**Tested Applications:**

WB, IHC, IF/ICC, Indirect ELISA

**Species Specificity:**

human, mouse, rat

## Storage

**Storage:**

Store at -80°C.

**Storage Buffer:**

PBS Only

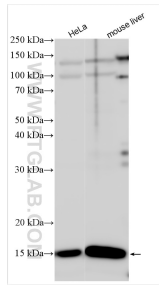
For technical support and original validation data for this product please contact:

T: 1 (888) 4PTGLAB (1-888-478-4522) (toll free in USA), or 1(312) 455-8498 (outside USA)

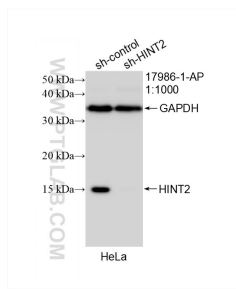
E: [proteintech@ptglab.com](mailto:proteintech@ptglab.com)  
W: [ptglab.com](http://ptglab.com)

This product is exclusively available under Proteintech Group brand and is not available to purchase from any other manufacturer.

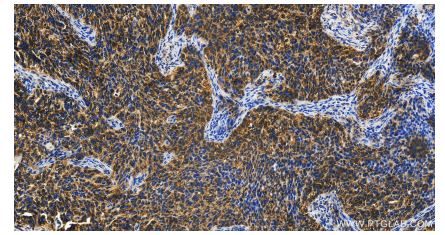
## Selected Validation Data



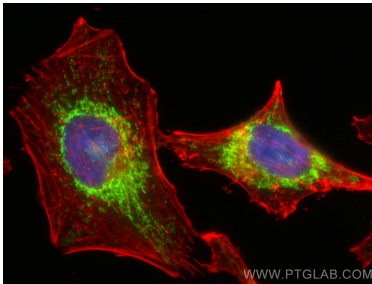
Various lysates were subjected to SDS PAGE followed by western blot with 17986-1-AP (HINT2 antibody) at dilution of 1:2000 incubated at room temperature for 1.5 hours. This data was developed using the same antibody clone with 17986-1-PBS in a different storage buffer formulation.



WB result of HINT2 antibody (17986-1-AP; 1:1000; incubated at room temperature for 1.5 hours) with sh-Control and sh-HINT2 transfected HeLa cells. This data was developed using the same antibody clone with 17986-1-PBS in a different storage buffer formulation.



Immunohistochemical analysis of paraffin-embedded human ovary cancer tissue slide using 17986-1-AP (HINT2 antibody) at dilution of 1:200 (under 20x lens). Heat mediated antigen retrieval with Tris-EDTA buffer (pH 9.0). This data was developed using the same antibody clone with 17986-1-PBS in a different storage buffer formulation.



Immunofluorescent analysis of (4% PFA) fixed HeLa cells using HINT2 antibody (17986-1-AP) at dilution of 1:200 and Coralite@488-Conjugated AffiniPure Goat Anti-Rabbit IgG(H+L) (SA00013-2), CL594-phalloidin (red). This data was developed using the same antibody clone with 17986-1-PBS in a different storage buffer formulation.