

For Research Use Only

INSL3 Polyclonal antibody

Catalog Number: 17997-1-AP **2 Publications**



Basic Information

Catalog Number: 17997-1-AP	GenBank Accession Number: BC071706	Purification Method: Antigen affinity purification
Size: 150ul, Concentration: 600 ug/ml by Nanodrop and 260 ug/ml by Bradford method using BSA as the standard;	GeneID (NCBI): 3640	Recommended Dilutions: WB 1:500-1:1000 IHC 1:50-1:500
Source: Rabbit	UNIPROT ID: P51460	
Isotype: IgG	Full Name: insulin-like 3 (Leydig cell)	
Immunogen Catalog Number: AG12455	Calculated MW: 131 aa, 14 kDa	

Applications

Tested Applications: WB, IHC, ELISA	Positive Controls: WB : human testis tissue, IHC : human testis tissue,
Cited Applications: WB	
Species Specificity: human	
Cited Species: rat	
Note-IHC: suggested antigen retrieval with TE buffer pH 9.0; (*) Alternatively, antigen retrieval may be performed with citrate buffer pH 6.0	

Background Information

Insulin-like 3 (INSL3), a Leydig cell-specific hormone, is essential for testis descent during foetal life and bone metabolism in adults. Insl3-deficient mice exhibit bilateral undescended testes located high in the abdominal cavity. INSL3 is presumed also to conform to a heterodimeric A-B structure of approximately 6 kDa once released from the producing cells. It is possible that both the mature form of INSL3 (6.6 kDa) and the pro-form(s) of INSL3 (12-14 kDa) are secreted from mammalian Leydig cells (PMID: 19329805).

Notable Publications

Author	Pubmed ID	Journal	Application
Xiang Zhou	36308879	Ecotoxicol Environ Saf	WB
Nan Yang	39700678	Exp Mol Pathol	WB

Storage

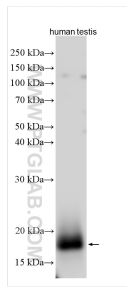
Storage:
Store at -20°C. Stable for one year after shipment.
Storage Buffer:
PBS with 0.02% sodium azide and 50% glycerol pH 7.3.
Aliquoting is unnecessary for -20°C storage

*** 20ul sizes contain 0.1% BSA

For technical support and original validation data for this product please contact:
T: 1 (888) 4PTGLAB (1-888-478-4522) (toll free in USA), or 1(312) 455-8498 (outside USA)
E: proteintech@ptglab.com
W: ptglab.com

This product is exclusively available under Proteintech Group brand and is not available to purchase from any other manufacturer.

Selected Validation Data



human testis tissue were subjected to SDS PAGE followed by western blot with 17997-1-AP (INSL3 antibody) at dilution of 1:600 incubated at room temperature for 1.5 hours.