

For Research Use Only

PP11 Polyclonal antibody

Catalog Number: 18002-1-AP

2 Publications



Basic Information

Catalog Number:

18002-1-AP

Size:

150ul, Concentration: 500 ug/ml by Nanodrop and 233 ug/ml by Bradford method using BSA as the standard;

Source:

Rabbit

Isotype:

IgG

Immunogen Catalog Number:

AG12494

GenBank Accession Number:

BC074763

GeneID (NCBI):

8909

UNIPROT ID:

P21128

Full Name:

26 serine protease

Calculated MW:

369 aa, 42 kDa

Observed MW:

35-40 kDa

Purification Method:

Antigen affinity purification

Recommended Dilutions:

WB 1:500-1:3000

IHC 1:50-1:500

IF/ICC 1:50-1:500

Applications

Tested Applications:

WB, IHC, IF/ICC, ELISA

Cited Applications:

IHC

Species Specificity:

human, mouse, rat

Cited Species:

human

Note-IHC: suggested antigen retrieval with TE buffer pH 9.0; (*) Alternatively, antigen retrieval may be performed with citrate buffer pH 6.0

Positive Controls:

WB : mouse lung tissue, HeLa cells

IHC : human breast cancer tissue,

IF/ICC : HeLa cells,

Notable Publications

Author	Pubmed ID	Journal	Application
Masataka Nomoto	34857990	J Clin Biochem Nutr	IHC
Roni Levy	12015537	Am J Obstet Gynecol	IHC

Storage

Storage:

Store at -20°C. Stable for one year after shipment.

Storage Buffer:

PBS with 0.02% sodium azide and 50% glycerol pH 7.3.

Aliquoting is unnecessary for -20°C storage

*** 20ul sizes contain 0.1% BSA

For technical support and original validation data for this product please contact:

T: 1 (888) 4PTGLAB (1-888-478-4522) (toll free in USA), or 1(312) 455-8498 (outside USA)

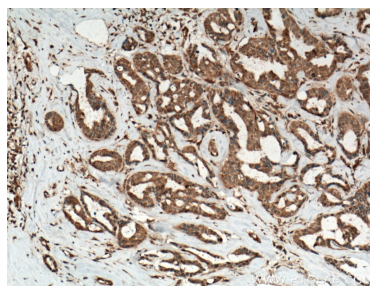
E: proteintech@ptglab.com
W: ptglab.com

This product is exclusively available under Proteintech Group brand and is not available to purchase from any other manufacturer.

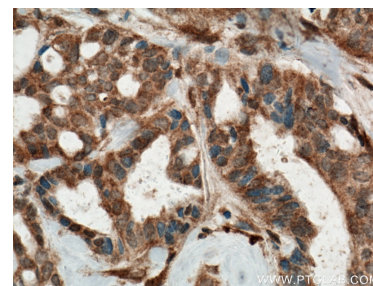
Selected Validation Data



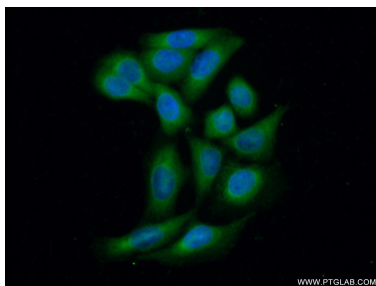
mouse lung tissue were subjected to SDS PAGE followed by western blot with 18002-1-AP (PP11 antibody) at dilution of 1:600 incubated at room temperature for 1.5 hours.



Immunohistochemical analysis of paraffin-embedded human breast cancer tissue slide using 18002-1-AP (PP11 antibody) at dilution of 1:200 (under 10x lens. Heat mediated antigen retrieval with Tris-EDTA buffer (pH 9.0).



Immunohistochemical analysis of paraffin-embedded human breast cancer tissue slide using 18002-1-AP (PP11 antibody) at dilution of 1:200 (under 40x lens. Heat mediated antigen retrieval with Tris-EDTA buffer (pH 9.0).



Immunofluorescent analysis of (-20°C Ethanol) fixed HeLa cells using 18002-1-AP (PP11 antibody) at dilution of 1:50 and Alexa Fluor 488-conjugated Goat Anti-Rabbit IgG(H+L).