

For Research Use Only

DNA Polymerase Beta Polyclonal antibody



Catalog Number: 18003-1-AP

Featured Product

9 Publications

Basic Information

Catalog Number:

18003-1-AP

Size:

150ul, Concentration: 700 µg/ml by Nanodrop and 333 µg/ml by Bradford method using BSA as the standard;

Source:

Rabbit

Isotype:

IgG

Immunogen Catalog Number:

AG12496

GenBank Accession Number:

BC100288

GeneID (NCBI):

5423

UNIPROT ID:

P06746

Full Name:

polymerase (DNA directed), beta

Calculated MW:

335 aa, 38 kDa

Observed MW:

38 kDa

Purification Method:

Antigen affinity purification

Recommended Dilutions:

WB 1:500-1:2000

IP 0.5-4.0 ug for 1.0-3.0 mg of total protein lysate

IHC 1:20-1:200

Applications

Tested Applications:

WB, IP, IHC, ELISA

Cited Applications:

WB

Species Specificity:

human

Cited Species:

human, rat, mouse

Note-IHC: suggested antigen retrieval with TE buffer pH 9.0; (*) Alternatively, antigen retrieval may be performed with citrate buffer pH 6.0

Positive Controls:

WB : COLO 320 cells, K-562 cells

IP : K-562 cells,

IHC : human testis tissue, human brain tissue, human kidney tissue, human ovary tissue, human spleen tissue

Notable Publications

Author	Pubmed ID	Journal	Application
Yuanyuan Wang	27843412	Cancer Cell Int	WB
Hu Lei	33397955	Nat Commun	WB
Shiladitya Sengupta	32826329	Proc Natl Acad Sci U S A	

Storage

Storage:

Store at -20°C. Stable for one year after shipment.

Storage Buffer:

PBS with 0.02% sodium azide and 50% glycerol pH 7.3.

Aliquoting is unnecessary for -20°C storage

*** 20ul sizes contain 0.1% BSA

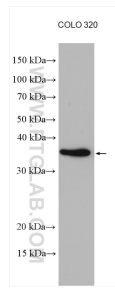
For technical support and original validation data for this product please contact:

T: 1 (888) 4PTGLAB (1-888-478-4522) (toll free in USA), or 1(312) 455-8498 (outside USA)

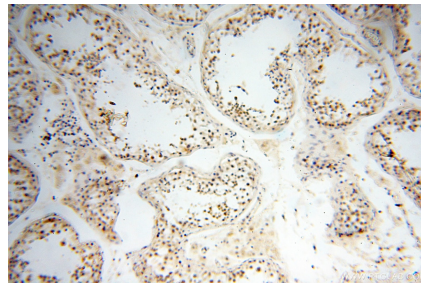
E: proteintech@ptglab.com
W: ptglab.com

This product is exclusively available under Proteintech Group brand and is not available to purchase from any other manufacturer.

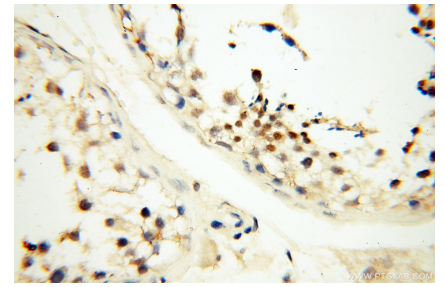
Selected Validation Data



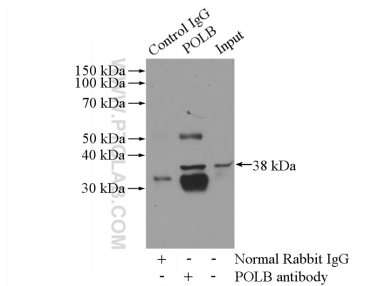
COLO 320 cells were subjected to SDS PAGE followed by western blot with 18003-1-AP (DNA polymerase beta antibody) at dilution of 1:1000 incubated at room temperature for 1.5 hours.



Immunohistochemical analysis of paraffin-embedded human testis using 18003-1-AP (DNA polymerase beta antibody) at dilution of 1:100 (under 10x lens).



Immunohistochemical analysis of paraffin-embedded human testis using 18003-1-AP (DNA polymerase beta antibody) at dilution of 1:100 (under 40x lens).



IP result of anti-DNA Polymerase Beta (IP:18003-1-AP, 4ug; Detection:18003-1-AP 1:800) with K-562 cells lysate 3200ug.