

For Research Use Only

CREBL2 Polyclonal antibody

Catalog Number: 18007-1-AP



Basic Information

Catalog Number:

18007-1-AP

Size:

150ul , Concentration: 500 ug/ml by Nanodrop and 333 ug/ml by Bradford method using BSA as the standard;

Source:

Rabbit

Isotype:

IgG

Immunogen Catalog Number:

AG12504

GenBank Accession Number:

BC106052

GeneID (NCBI):

1389

UNIPROT ID:

O60519

Full Name:

cAMP responsive element binding protein-like 2

Calculated MW:

120 aa, 14 kDa

Observed MW:

17 kDa

Purification Method:

Antigen affinity purification

Recommended Dilutions:

WB 1:500-1:1000

Applications

Tested Applications:

WB, ELISA

Species Specificity:

human, mouse, rat

Positive Controls:

WB : human liver tissue, mouse liver tissue

Storage

Storage:

Store at -20°C. Stable for one year after shipment.

Storage Buffer:

PBS with 0.02% sodium azide and 50% glycerol pH 7.3.

Aliquoting is unnecessary for -20°C storage

*** 20ul sizes contain 0.1% BSA

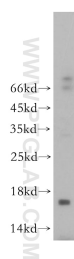
For technical support and original validation data for this product please contact:

T: 1 (888) 4PTGLAB (1-888-478-4522) (toll free in USA), or 1(312) 455-8498 (outside USA)

E: proteintech@ptglab.com
W: ptglab.com

This product is exclusively available under Proteintech Group brand and is not available to purchase from any other manufacturer.

Selected Validation Data



human liver tissue were subjected to SDS PAGE followed by western blot with 18007-1-AP (CREBL2 antibody) at dilution of 1:500 incubated at room temperature for 1.5 hours.