

For Research Use Only

ATPAF1 Polyclonal antibody

Catalog Number: 18016-1-AP

4 Publications



Basic Information

Catalog Number:

18016-1-AP

Size:

150ul, Concentration: 700 ug/ml by Nanodrop;

Source:

Rabbit

Isotype:

IgG

Immunogen Catalog Number:

AG12557

GenBank Accession Number:

BC071731

GeneID (NCBI):

64756

UNIPROT ID:

Q5TC12

Full Name:

ATP synthase mitochondrial F1 complex assembly factor 1

Calculated MW:

328 aa, 36 kDa

Observed MW:

31 kDa

Purification Method:

Antigen affinity purification

Recommended Dilutions:

WB 1:500-1:4000

IHC 1:50-1:500

Applications

Tested Applications:

WB, IHC, ELISA

Cited Applications:

WB

Species Specificity:

human, mouse, rat

Cited Species:

human, mouse

Note-IHC: suggested antigen retrieval with TE buffer pH 9.0; (*) Alternatively, antigen retrieval may be performed with citrate buffer pH 6.0

Positive Controls:

WB : HEK-293 cells, PC-3 cells, mouse heart tissue, mouse kidney tissue, rat heart tissue,

IHC : human ovary cancer tissue,

Notable Publications

Author	Pubmed ID	Journal	Application
Yu Sun	31184932	Am J Physiol Endocrinol Metab	WB
Han Yan	36470472	Metabolism	WB
Jiatong Xu	32824856	Int J Mol Sci	WB

Storage

Storage:

Store at -20°C. Stable for one year after shipment.

Storage Buffer:

PBS with 0.02% sodium azide and 50% glycerol pH 7.3.

Aliquoting is unnecessary for -20°C storage

*** 20ul sizes contain 0.1% BSA

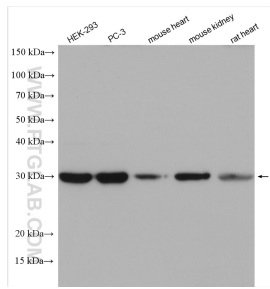
For technical support and original validation data for this product please contact:

T: 1 (888) 4PTGLAB (1-888-478-4522) (toll free in USA), or 1(312) 455-8498 (outside USA)

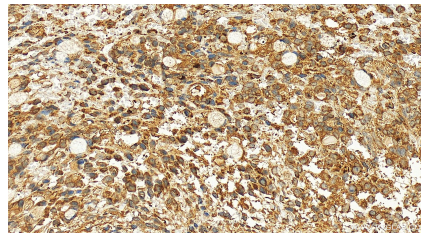
E: proteintech@ptglab.com
W: ptglab.com

This product is exclusively available under Proteintech Group brand and is not available to purchase from any other manufacturer.

Selected Validation Data



Various lysates were subjected to SDS PAGE followed by western blot with 18016-1-AP (ATPAF1 antibody) at dilution of 1:2000 incubated at room temperature for 1.5 hours.



Immunohistochemical analysis of paraffin-embedded human ovary cancer tissue slide using 18016-1-AP (ATPAF1 antibody) at dilution of 1:200 (under 20x lens). Heat mediated antigen retrieval with Tris-EDTA buffer (pH 9.0).