

For Research Use Only

# CGNL1 Polyclonal antibody, PBS Only

Catalog Number:18031-1-PBS



## Basic Information

**Catalog Number:**

18031-1-PBS

**Size:**

100ug , Concentration: 1 mg/ml by  
Nanodrop;

**Source:**

Rabbit

**Isotype:**

IgG

**Immunogen Catalog Number:**

AG12598

**GenBank Accession Number:**

BC093827

**GeneID (NCBI):**

84952

**UNIPROT ID:**

Q0VF96

**Full Name:**

cingulin-like 1

**Calculated MW:**

1302 aa, 149 kDa

**Observed MW:**

149 kDa

**Purification Method:**

Antigen affinity purification

## Applications

**Tested Applications:**

WB, IHC, Indirect ELISA

**Species Specificity:**

human, mouse

## Storage

**Storage:**

Store at -80°C.

**Storage Buffer:**

PBS only, pH7.3

For technical support and original validation data for this product please contact:

T: 1 (888) 4PTGLAB (1-888-478-4522) (toll free  
in USA), or 1(312) 455-8498 (outside USA)

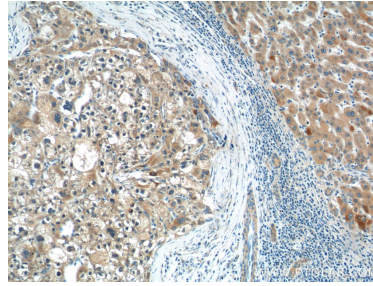
E: [proteintech@ptglab.com](mailto:proteintech@ptglab.com)  
W: [ptglab.com](http://ptglab.com)

This product is exclusively available under Proteintech Group brand and is not available to purchase from any other manufacturer.

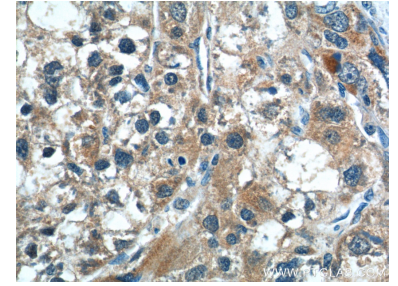
## Selected Validation Data



NIH/3T3 cells were subjected to SDS PAGE followed by western blot with 18031-1-AP (CGNL1 antibody) at dilution of 1:2000 incubated at room temperature for 1.5 hours. This data was developed using the same antibody clone with 18031-1-PBS in a different storage buffer formulation.



Immunohistochemical analysis of paraffin-embedded human liver cancer tissue slide using 18031-1-AP (CGNL1 Antibody) at dilution of 1:50 (under 10x lens). This data was developed using the same antibody clone with 18031-1-PBS in a different storage buffer formulation.



Immunohistochemical analysis of paraffin-embedded human liver cancer tissue slide using 18031-1-AP (CGNL1 Antibody) at dilution of 1:50 (under 40x lens). This data was developed using the same antibody clone with 18031-1-PBS in a different storage buffer formulation.