

For Research Use Only

LGI2 Polyclonal antibody

Catalog Number: 18044-1-AP



Basic Information

Catalog Number:

18044-1-AP

Size:

150ul , Concentration: 400 ug/ml by Nanodrop and 307 ug/ml by Bradford method using BSA as the standard;

Source:

Rabbit

Isotype:

IgG

Immunogen Catalog Number:

AG12680

GenBank Accession Number:

BC101759

GeneID (NCBI):

55203

UNIPROT ID:

Q8NOV4

Full Name:

leucine-rich repeat LGI family, member 2

Calculated MW:

545 aa, 62 kDa

Observed MW:

62 kDa

Purification Method:

Antigen affinity purification

Recommended Dilutions:

WB 1:500-1:3000

Applications

Tested Applications:

WB, ELISA

Species Specificity:

human, mouse, rat

Positive Controls:

WB : mouse brain tissue, mouse heart tissue, rat brain tissue

Storage

Storage:

Store at -20°C. Stable for one year after shipment.

Storage Buffer:

PBS with 0.02% sodium azide and 50% glycerol pH 7.3.

Aliquoting is unnecessary for -20°C storage

*** 20ul sizes contain 0.1% BSA

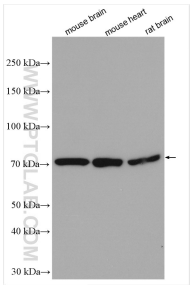
For technical support and original validation data for this product please contact:

T: 1 (888) 4PTGLAB (1-888-478-4522) (toll free in USA), or 1(312) 455-8498 (outside USA)

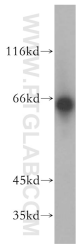
E: proteintech@ptglab.com
W: ptglab.com

This product is exclusively available under Proteintech Group brand and is not available to purchase from any other manufacturer.

Selected Validation Data



Various lysates were subjected to SDS PAGE followed by western blot with 18044-1-AP (LGI2 antibody) at dilution of 1:1500 incubated at room temperature for 1.5 hours.



mouse heart tissue were subjected to SDS PAGE followed by western blot with 18044-1-AP (LGI2 antibody) at dilution of 1:800 incubated at room temperature for 1.5 hours.