

For Research Use Only

KIRREL3 Polyclonal antibody

Catalog Number: 18055-1-AP



Basic Information

Catalog Number: 18055-1-AP	GenBank Accession Number: BC101801	Purification Method: Antigen affinity purification
Size: 150ul , Concentration: 133 µg/ml by Bradford method using BSA as the standard;	GeneID (NCBI): 84623	Recommended Dilutions: WB 1:500-1:1000
Source: Rabbit	Full Name: kin of IRRE like 3 (Drosophila)	
Isotype: IgG	Calculated MW: 778 aa, 85 kDa	
Immunogen Catalog Number: AG12573	Observed MW: 65-70 kDa, 125 kDa	

Applications

Tested Applications:
WB, ELISA

Species Specificity:
human, mouse, rat

Positive Controls:

WB : mouse testis tissue, mouse brain tissue, mouse kidney tissue, rat brain tissue

Background Information

Storage

Storage:
Store at -20°C. Stable for one year after shipment.

Storage Buffer:
PBS with 0.02% sodium azide and 50% glycerol pH 7.3.

Aliquoting is unnecessary for -20°C storage

*** 20ul sizes contain 0.1% BSA

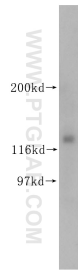
For technical support and original validation data for this product please contact:

T: 1 (888) 4PTGLAB (1-888-478-4522) (toll free in USA), or 1(312) 455-8498 (outside USA)

E: proteintech@ptglab.com
W: ptglab.com

This product is exclusively available under Proteintech Group brand and is not available to purchase from any other manufacturer.

Selected Validation Data



mouse testis tissue were subjected to SDS PAGE followed by western blot with 18055-1-AP (KIRREL3 antibody) at dilution of 1:400 incubated at room temperature for 1.5 hours.