

For Research Use Only

SEMA7A Polyclonal antibody

Catalog Number: 18070-1-AP

3 Publications



Basic Information

Catalog Number:

18070-1-AP

Size:

150ul, Concentration: 450 ug/ml by Nanodrop and 300 ug/ml by Bradford method using BSA as the standard;

Source:

Rabbit

Isotype:

IgG

Immunogen Catalog Number:

AG12707

GenBank Accession Number:

BC101643

GeneID (NCBI):

8482

UNIPROT ID:

O75326

Full Name:

semaphorin 7A, GPI membrane anchor (John Milton Hagen blood group)

Calculated MW:

666 aa, 75 kDa

Observed MW:

75-80 kDa

Purification Method:

Antigen affinity purification

Recommended Dilutions:

WB 1:1000-1:4000

IP 0.5-4.0 ug for 1.0-3.0 mg of total protein lysate

Applications

Tested Applications:

WB, IP, ELISA

Cited Applications:

WB, IP

Species Specificity:

human, mouse

Cited Species:

human, mouse

Positive Controls:

WB : human placenta tissue, mouse brain tissue

IP : human placenta tissue,

Background Information

SEMA7A, also named CD108 and SEMA7, belongs to the semaphorin family. SEMA7A is the only membrane-associated glycosylphosphatidylinositol (GPI)-linked semaphorin and plays a role in the regulation of neuronal axon outgrowth. In addition to its role in guiding axon pathfinding during neuronal development, Sema7A has diverse functions in morphogenesis and immune cell control and regulates T cell responses via the $\alpha 1 \beta 1$ integrin receptor (PMID: 31179640). SEMA7A has 2 isoforms with molecular weights of 73 and 75 kDa, respectively.

Notable Publications

Author	Pubmed ID	Journal	Application
Zhen Ren	39744480	J Cancer	WB,IP
Qiongyu Lu	36842496	Mol Metab	WB
Xiaochao Tan	36757799	J Clin Invest	WB

Storage

Storage:

Store at -20°C. Stable for one year after shipment.

Storage Buffer:

PBS with 0.02% sodium azide and 50% glycerol pH 7.3.

Aliquoting is unnecessary for -20°C storage

*** 20ul sizes contain 0.1% BSA

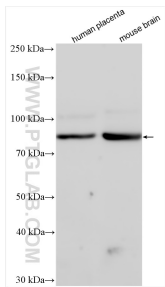
For technical support and original validation data for this product please contact:

T: 1 (888) 4PTGLAB (1-888-478-4522) (toll free in USA), or 1(312) 455-8498 (outside USA)

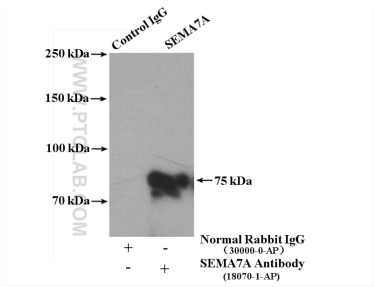
E: proteintech@ptglab.com
W: ptglab.com

This product is exclusively available under Proteintech Group brand and is not available to purchase from any other manufacturer.

Selected Validation Data



Various lysates were subjected to SDS PAGE followed by western blot with 18070-1-AP (SEMA7A antibody) at dilution of 1:2000 incubated at room temperature for 1.5 hours.



IP result of anti-SEMA7A (IP:18070-1-AP, 4ug; Detection:18070-1-AP 1:500) with human placenta tissue lysate 2600 ug.