

For Research Use Only

# G6PC2 Polyclonal antibody

Catalog Number: 18074-1-AP



## Basic Information

<b>Catalog Number:</b> 18074-1-AP	<b>GenBank Accession Number:</b> BC104778	<b>Purification Method:</b> Antigen affinity purification
<b>Size:</b> 150ul , Concentration: 350 ug/ml by Nanodrop;	<b>GeneID (NCBI):</b> 57818	<b>Recommended Dilutions:</b> IP: 0.5-4.0 ug for 1.0-3.0 mg of total protein lysate IHC: 1:50-1:500 IF-P: 1:50-1:500
<b>Source:</b> Rabbit	<b>UNIPROT ID:</b> Q9NQR9	
<b>Isotype:</b> IgG	<b>Full Name:</b> glucose-6-phosphatase, catalytic, 2	
<b>Immunogen Catalog Number:</b> AG12764	<b>Calculated MW:</b> 355 aa, 41 kDa	
	<b>Observed MW:</b> 38-40 kDa	

## Applications

### Tested Applications:

IHC, IF-P, IP, ELISA

### Species Specificity:

human, mouse

**Note-IHC: suggested antigen retrieval with TE buffer pH 9.0; (\*) Alternatively, antigen retrieval may be performed with citrate buffer pH 6.0**

### Positive Controls:

IP: mouse pancreas tissue,

IHC: mouse pancreas tissue,

IF-P: mouse pancreas tissue,

## Background Information

G6PC2, also known as IGRP, is a member of the glucose-6-phosphatase catalytic subunit (G6PC) gene family. G6PC2 catalyzes the hydrolysis of glucose-6-phosphate to glucose and inorganic phosphate within the lumen of the endoplasmic reticulum. G6PC2 is mainly expressed in pancreatic islet  $\beta$ -cells. G6PC2 acts to oppose the action of the beta cell glucose sensor, glucokinase, by creating a futile substrate cycle. (PMID: 37855366, PMID: 32569842, PMID: 37552875)

## Storage

### Storage:

Store at -20°C. Stable for one year after shipment.

### Storage Buffer:

PBS with 0.02% sodium azide and 50% glycerol, pH7.3

Aliquoting is unnecessary for -20°C storage

\*\*\* 20ul sizes contain 0.1% BSA

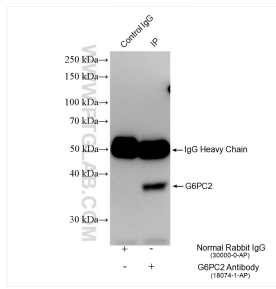
For technical support and original validation data for this product please contact:

T: 1 (888) 4PTGLAB (1-888-478-4522) (toll free in USA), or 1(312) 455-8498 (outside USA)

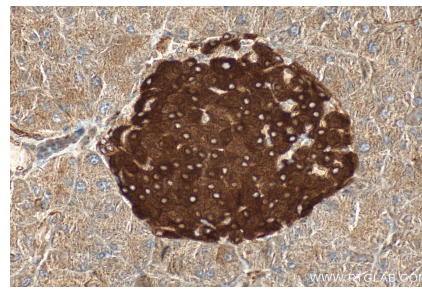
E: [proteintech@ptglab.com](mailto:proteintech@ptglab.com)  
W: [ptglab.com](http://ptglab.com)

This product is exclusively available under Proteintech Group brand and is not available to purchase from any other manufacturer.

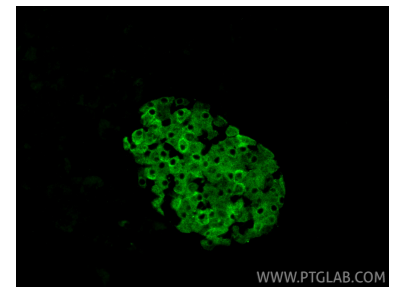
## Selected Validation Data



IP result of anti-G6PC2 (IP:18074-1-AP, 4ug; Detection:18074-1-AP 1:500) with mouse pancreas tissue lysate 2480 ug.



Immunohistochemical analysis of paraffin-embedded mouse pancreas tissue slide using 18074-1-AP (G6PC2 antibody) at dilution of 1:200 (under 40x lens). Heat mediated antigen retrieval with Tris-EDTA buffer (pH 9.0).



Immunofluorescent analysis of (4% PFA) fixed paraffin-embedded mouse pancreas tissue using G6PC2 antibody (18074-1-AP) at dilution of 1:200 and CoraLite®488-Conjugated Goat Anti-Rabbit IgG(H+L) (SA00013-2). Heat mediated antigen retrieval with Tris-EDTA buffer (pH 9.0).