

For Research Use Only

G6PC2 Polyclonal antibody, PBS Only

Catalog Number: 18074-1-PBS



Basic Information

Catalog Number: 18074-1-PBS	GenBank Accession Number: BC104778	Purification Method: Antigen affinity purification
Size: 100ug, Concentration: 1 mg/ml by Nanodrop;	GeneID (NCBI): 57818	
Source: Rabbit	UNIPROT ID: Q9NQR9	
Isotype: IgG	Full Name: glucose-6-phosphatase, catalytic, 2	
Immunogen Catalog Number: AG12764	Calculated MW: 355 aa, 41 kDa	
	Observed MW: 38-40 kDa	

Applications

Tested Applications:
IHC, IF-P, IP, Indirect ELISA

Species Specificity:
human, mouse

Background Information

G6PC2, also known as IGRP, is a member of the glucose-6-phosphatase catalytic subunit (G6PC) gene family. G6PC2 catalyzes the hydrolysis of glucose-6-phosphate to glucose and inorganic phosphate within the lumen of the endoplasmic reticulum. G6PC2 is mainly expressed in pancreatic islet β -cells. G6PC2 acts to oppose the action of the beta cell glucose sensor, glucokinase, by creating a futile substrate cycle. (PMID: 37855366, PMID: 32569842, PMID: 37552875)

Storage

Storage:
Store at -80°C.

Storage Buffer:
PBS only, pH7.3

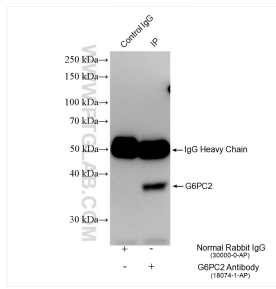
For technical support and original validation data for this product please contact:

T: 1 (888) 4PTGLAB (1-888-478-4522) (toll free in USA), or 1(312) 455-8498 (outside USA)

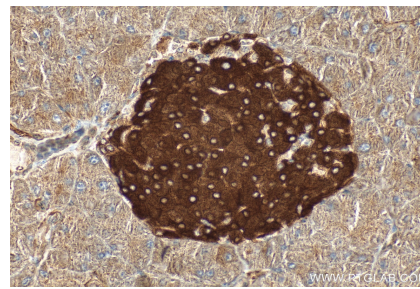
E: proteintech@ptglab.com
W: ptglab.com

This product is exclusively available under Proteintech Group brand and is not available to purchase from any other manufacturer.

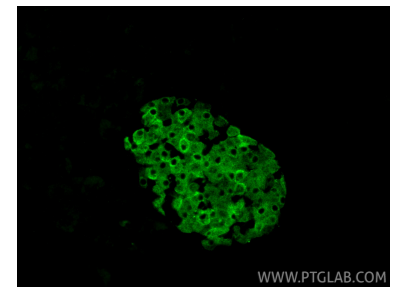
Selected Validation Data



IP result of anti-G6PC2 (IP:18074-1-AP, 4ug; Detection:18074-1-AP 1:500) with mouse pancreas tissue lysate 2480 ug. This data was developed using the same antibody clone with 18074-1-PBS in a different storage buffer formulation.



Immunohistochemical analysis of paraffin-embedded mouse pancreas tissue slide using 18074-1-AP (G6PC2 antibody) at dilution of 1:200 (under 40x lens). Heat mediated antigen retrieval with Tris-EDTA buffer (pH 9.0). This data was developed using the same antibody clone with 18074-1-PBS in a different storage buffer formulation.



Immunofluorescent analysis of (4% PFA) fixed paraffin-embedded mouse pancreas tissue using G6PC2 antibody (18074-1-AP) at dilution of 1:200 and CoraLite®488-Conjugated Goat Anti-Rabbit IgG(H+L) (SA00013-2). Heat mediated antigen retrieval with Tris-EDTA buffer (pH 9.0). This data was developed using the same antibody clone with 18074-1-PBS in a different storage buffer formulation.