

For Research Use Only

MMP26 Polyclonal antibody

Catalog Number: 18087-1-AP

2 Publications



Basic Information

Catalog Number: 18087-1-AP	GenBank Accession Number: BC101541	Purification Method: Antigen affinity purification
Size: 150ul , Concentration: 240 ug/ml by Nanodrop and 153 ug/ml by Bradford method using BSA as the standard;	GeneID (NCBI): 56547	Recommended Dilutions: WB 1:500-1:2000
Source: Rabbit	UNIPROT ID: Q9NRE1	IHC 1:20-1:200
Isotype: IgG	Full Name: matrix metalloproteinase 26	IF/ICC 1:20-1:200
Immunogen Catalog Number: AG12806	Calculated MW: 262 aa, 30 kDa	
	Observed MW: 19 kDa	

Applications

Tested Applications: WB, IHC, IF/ICC, ELISA	Positive Controls:
Cited Applications: WB, IHC	WB : SKOV-3 cells, HEK-293 cells, human placenta tissue
Species Specificity: human	IHC : human prostate cancer tissue,
Cited Species: human	IF/ICC : SKOV-3 cells,
Note-IHC: suggested antigen retrieval with TE buffer pH 9.0; (*) Alternatively, antigen retrieval may be performed with citrate buffer pH 6.0	

Background Information

MMP26(matrix metalloproteinase 26) may hydrolyze collagen type IV, fibronectin, fibrinogen, beta-casein, type I gelatin and alpha-1 proteinase inhibitor.MMP26 is expressed in placenta and uterus and is widely expressed in malignant tumors from different sources as well as in diverse tumor cell lines(PMID: 10987280).The proenzyme without the signal peptide has a calculated molecular mass of 29 kDa and the processed enzyme has a calculated molecular mass of 19 kDa(PMID:15574774).This antibody is specific to MMP26.

Notable Publications

Author	Pubmed ID	Journal	Application
Teng Cheng	29270749	J Huazhong Univ Sci Technolog Med Sci	IHC
Sarah Abdullah	37315138	Sci Adv	WB

Storage

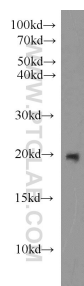
Storage:
Store at -20°C. Stable for one year after shipment.
Storage Buffer:
PBS with 0.02% sodium azide and 50% glycerol pH 7.3.
Aliquoting is unnecessary for -20°C storage

*** 20ul sizes contain 0.1% BSA

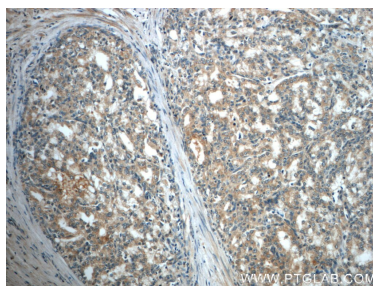
For technical support and original validation data for this product please contact:
T: 1 (888) 4PTGLAB (1-888-478-4522) (toll free in USA), or 1(312) 455-8498 (outside USA)
E: proteintech@ptglab.com
W: ptglab.com

This product is exclusively available under Proteintech Group brand and is not available to purchase from any other manufacturer.

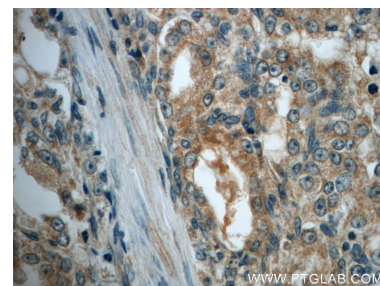
Selected Validation Data



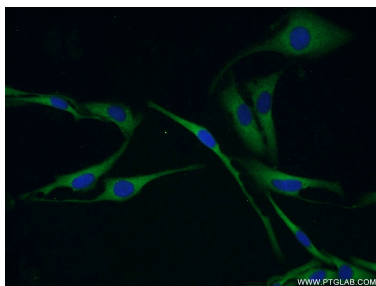
SKOV-3 cells were subjected to SDS PAGE followed by western blot with 18087-1-AP (MMP26 antibody) at dilution of 1:1000 incubated at room temperature for 1.5 hours.



Immunohistochemical analysis of paraffin-embedded human prostate cancer slide using 18087-1-AP (MMP26 Antibody) at dilution of 1:50.



Immunohistochemical analysis of paraffin-embedded human prostate cancer slide using 18087-1-AP (MMP26 Antibody) at dilution of 1:50.



Immunofluorescent analysis of SKOV-3 cells using 18087-1-AP (MMP26 antibody) at dilution of 1:50 and Alexa Fluor 488-conjugated Goat Anti-Rabbit IgG(H+L).