

For Research Use Only

# PLA2G4E Polyclonal antibody, PBS Only

Catalog Number: 18088-1-PBS

Featured Product



## Basic Information

### Catalog Number:

18088-1-PBS

### Size:

100ug, Concentration: 1 mg/ml by Nanodrop;

### Source:

Rabbit

### Isotype:

IgG

### Immunogen Catalog Number:

AG12808

### GenBank Accession Number:

BC101584

### GeneID (NCBI):

123745

### UNIPROT ID:

Q3MJ16

### Full Name:

phospholipase A2, group IVE

### Calculated MW:

868 aa, 99 kDa

### Observed MW:

99 kDa, 57 kDa

### Purification Method:

Antigen affinity purification

## Applications

### Tested Applications:

WB, IHC, IF/ICC, Indirect ELISA

### Species Specificity:

human, mouse, rat

## Background Information

PLA2G4E (Phospholipase A2 group IVE), also known as cPLA2-epsilon. Calcium-dependent N-acyltransferase is involved in the biosynthesis of N-acyl ethanolamines (NAEs) in the brain (PMID:29447909). Transfers the sn-1 fatty acyl chain of phosphatidylcholine (fatty acyl donor) to the amine group of phosphatidylethanolamine (fatty acyl acceptor) to generate N-acyl phosphatidylethanolamine (NAPE). Similarly can use plasmenylethanolamine as a fatty acyl acceptor to form N-acyl plasmenylethanolamine (N-Acyl-PlsEt). Both NAPE and N-Acyl-PlsEt can serve as precursors of bioactive NAEs like N-arachidonoyl phosphatidylethanolamine also called anandamide (PMID:29447909; 30517655).

## Storage

### Storage:

Store at -80°C.

### Storage Buffer:

PBS Only

For technical support and original validation data for this product please contact:

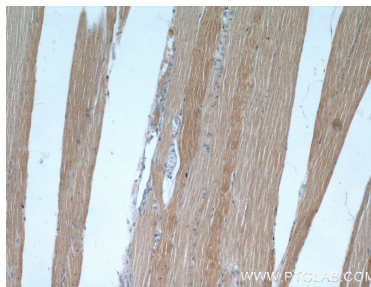
T: 1 (888) 4PTGLAB (1-888-478-4522) (toll free in USA), or 1(312) 455-8498 (outside USA)

E: [proteintech@ptglab.com](mailto:proteintech@ptglab.com)  
W: [ptglab.com](http://ptglab.com)

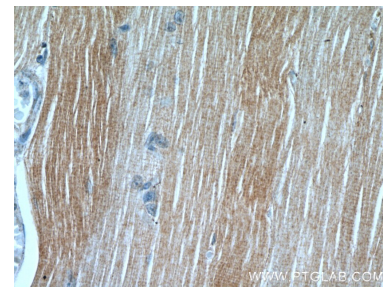
This product is exclusively available under Proteintech Group brand and is not available to purchase from any other manufacturer.

## Selected Validation Data

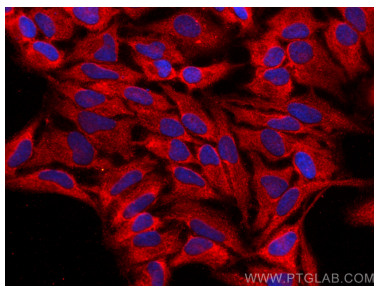
Various lysates were subjected to SDS PAGE followed by western blot with 18088-1-AP (PLA2G4E antibody) at dilution of 1:2000 incubated at room temperature for 1.5 hours. This data was developed using the same antibody clone with 18088-1-PBS in a different storage buffer formulation.



Immunohistochemical analysis of paraffin-embedded human skeletal muscle using 18088-1-AP (PLA2G4E antibody) at dilution of 1:50 (under 10x lens). This data was developed using the same antibody clone with 18088-1-PBS in a different storage buffer formulation.



Immunohistochemical analysis of paraffin-embedded human skeletal muscle using 18088-1-AP (PLA2G4E antibody) at dilution of 1:50 (under 40x lens). This data was developed using the same antibody clone with 18088-1-PBS in a different storage buffer formulation.



Immunofluorescent analysis of (-20°C Ethanol) fixed HeLa cells using PLA2G4E antibody (18088-1-AP) at dilution of 1:400 and CoraLite®594-Conjugated Goat Anti-Rabbit IgG(H+L) (SA00013-4). This data was developed using the same antibody clone with 18088-1-PBS in a different storage buffer formulation.