

For Research Use Only

PAPPA Polyclonal antibody

Catalog Number: 18095-1-AP



Basic Information

Catalog Number: 18095-1-AP	GenBank Accession Number: BC078657	Purification Method: Antigen affinity purification
Size: 150ul , Concentration: 550 ug/ml by Nanodrop and 307 ug/ml by Bradford method using BSA as the standard;	GeneID (NCBI): 5069	Recommended Dilutions: WB 1:500-1:2000 IHC 1:50-1:500
Source: Rabbit	UNIPROT ID: Q13219	
Isotype: IgG	Full Name: pregnancy-associated plasma protein A, pappalysin 1	
Immunogen Catalog Number: AG11863	Calculated MW: 1627 aa, 181 kDa	
	Observed MW: 180-220 kDa	

Applications

Tested Applications: WB, IHC, ELISA	Positive Controls:
Species Specificity: human	WB : human placenta tissue,
Note-IHC: suggested antigen retrieval with TE buffer pH 9.0; (*) Alternatively, antigen retrieval may be performed with citrate buffer pH 6.0	IHC : human placenta tissue,

Background Information

Pregnancy-associated plasma protein A (PAPPA) is a metalloproteinase secreted by human placenta, and it can interact with IGF-binding proteins (IGFBPs) to regulate the proteolysis and the bioavailability of insulin-like growth factor (IGF). Circulating PAPPA represents a consolidated biomarker in combined first-trimester screening tests, allowing an early prenatal diagnosis of chromosomal abnormalities, preeclampsia, and intrauterine growth restriction risk. PAPPA is highly expressed in placenta and pregnancy serum (PMID: 34974815, 34974815).

Storage

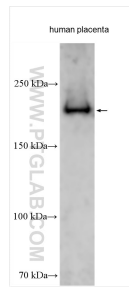
Storage:
Store at -20°C. Stable for one year after shipment.
Storage Buffer:
PBS with 0.02% sodium azide and 50% glycerol pH 7.3.
Aliquoting is unnecessary for -20°C storage

*** 20ul sizes contain 0.1% BSA

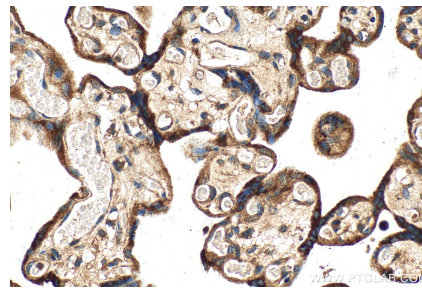
For technical support and original validation data for this product please contact:
T: 1 (888) 4PTGLAB (1-888-478-4522) (toll free in USA), or 1(312) 455-8498 (outside USA)
E: proteintech@ptglab.com
W: ptglab.com

This product is exclusively available under Proteintech Group brand and is not available to purchase from any other manufacturer.

Selected Validation Data



human placenta tissue were subjected to SDS PAGE followed by western blot with 18095-1-AP (PAPPA antibody) at dilution of 1:1000 incubated at room temperature for 1.5 hours.



Immunohistochemical analysis of paraffin-embedded human placenta tissue slide using 18095-1-AP (PAPPA antibody) at dilution of 1:100 (under 40x lens). Heat mediated antigen retrieval with Tris-EDTA buffer (pH 9.0).