

For Research Use Only

CPNE5 Polyclonal antibody

Catalog Number: 18097-1-AP



Basic Information

Catalog Number:

18097-1-AP

Size:

150ul, Concentration: 350 ug/ml by Nanodrop and 213 ug/ml by Bradford method using BSA as the standard;

Source:

Rabbit

Isotype:

IgG

Immunogen Catalog Number:

AG11987

GenBank Accession Number:

BC053872

GeneID (NCBI):

57699

UNIPROT ID:

Q9HCH3

Full Name:

copine V

Calculated MW:

593 aa, 66 kDa

Observed MW:

68 kDa

Purification Method:

Antigen affinity purification

Recommended Dilutions:

WB 1:200-1:1000

Applications

Tested Applications:

WB, ELISA

Species Specificity:

human, mouse, rat

Positive Controls:

WB : mouse embryo tissue,

Background Information

Copines are a family of evolutionarily conserved calcium-dependent phospholipid-binding proteins (PMID: 9430674). They contain two Ca(2+)- and phospholipid-binding domains known as C2 domains. Copines are potentially involved in regulating membrane trafficking and in protein-protein interactions. Copine-5 (CPNE5) has been reported to have a potential role in the development of murine central nervous system (PMID: 18614158).

Storage

Storage:

Store at -20°C. Stable for one year after shipment.

Storage Buffer:

PBS with 0.02% sodium azide and 50% glycerol pH 7.3.

Aliquoting is unnecessary for -20°C storage

*** 20ul sizes contain 0.1% BSA

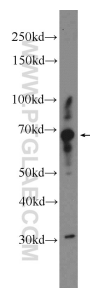
For technical support and original validation data for this product please contact:

T: 1 (888) 4PTGLAB (1-888-478-4522) (toll free in USA), or 1(312) 455-8498 (outside USA)

E: proteintech@ptglab.com
W: ptglab.com

This product is exclusively available under Proteintech Group brand and is not available to purchase from any other manufacturer.

Selected Validation Data



mouse embryo tissue were subjected to SDS PAGE followed by western blot with 18097-1-AP (CPNE5 Antibody) at dilution of 1:300 incubated at room temperature for 1.5 hours.