

For Research Use Only

SGCG Polyclonal antibody, PBS Only

Catalog Number: 18102-1-PBS



Basic Information

Catalog Number:

18102-1-PBS

Size:

100ug, Concentration: 1 mg/ml by Nanodrop;

Source:

Rabbit

Isotype:

IgG

Immunogen Catalog Number:

AG12402

GenBank Accession Number:

BC074777

GeneID (NCBI):

6445

UNIPROT ID:

Q13326

Full Name:

sarcoglycan, gamma (35kDa dystrophin-associated glycoprotein)

Calculated MW:

291 aa, 32 kDa

Observed MW:

35-38 kDa

Purification Method:

Antigen affinity purification

Applications

Tested Applications:

WB, IHC, IP, Indirect ELISA

Species Specificity:

human, mouse, rat

Storage

Storage:

Store at -80°C.

Storage Buffer:

PBS only, pH7.3

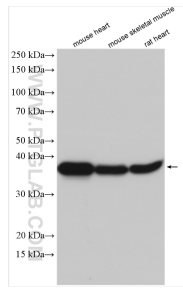
For technical support and original validation data for this product please contact:

T: 1 (888) 4PTGLAB (1-888-478-4522) (toll free in USA), or 1(312) 455-8498 (outside USA)

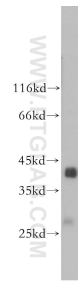
E: proteintech@ptglab.com
W: ptglab.com

This product is exclusively available under Proteintech Group brand and is not available to purchase from any other manufacturer.

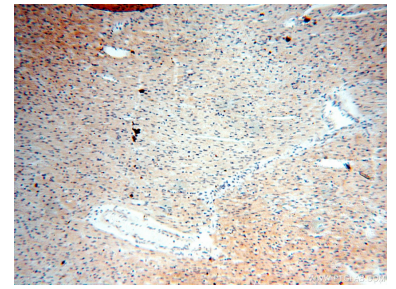
Selected Validation Data



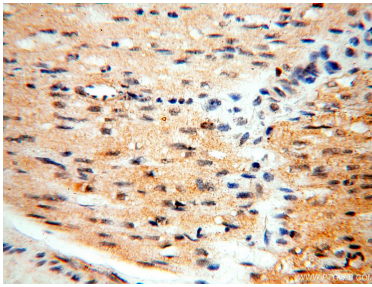
Various lysates were subjected to SDS PAGE followed by western blot with 18102-1-AP (SGCG antibody) at dilution of 1:4000 incubated at room temperature for 1.5 hours. This data was developed using the same antibody clone with 18102-1-PBS in a different storage buffer formulation.



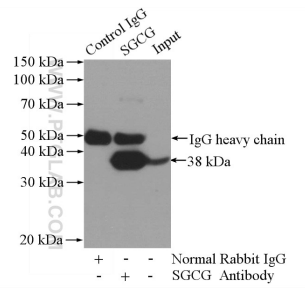
human skeletal muscle tissue were subjected to SDS PAGE followed by western blot with 18102-1-AP (SGCG antibody) at dilution of 1:600 incubated at room temperature for 1.5 hours. This data was developed using the same antibody clone with 18102-1-PBS in a different storage buffer formulation.



Immunohistochemical analysis of paraffin-embedded human heart using 18102-1-AP (SGCG antibody) at dilution of 1:50 (under 10x lens). This data was developed using the same antibody clone with 18102-1-PBS in a different storage buffer formulation.



Immunohistochemical analysis of paraffin-embedded human heart using 18102-1-AP (SGCG antibody) at dilution of 1:50 (under 40x lens). This data was developed using the same antibody clone with 18102-1-PBS in a different storage buffer formulation.



IP result of anti-SGCG (IP:18102-1-AP, 4ug; Detection:18102-1-AP 1:1000) with mouse heart tissue lysate 4000ug. This data was developed using the same antibody clone with 18102-1-PBS in a different storage buffer formulation.