

For Research Use Only

# PHACTR3 Polyclonal antibody

Catalog Number: 18107-1-AP



## Basic Information

### Catalog Number:

18107-1-AP

### Size:

150ul , Concentration: 1000 ug/ml by Nanodrop;

### Source:

Rabbit

### Isotype:

IgG

### Immunogen Catalog Number:

AG12486

### GenBank Accession Number:

BC108303

### GeneID (NCBI):

116154

### UNIPROT ID:

Q96KR7

### Full Name:

phosphatase and actin regulator 3

### Calculated MW:

559 aa, 63 kDa

### Observed MW:

60 kDa and 75 kDa

### Purification Method:

Antigen affinity purification

### Recommended Dilutions:

IP 0.5-4.0 ug for 1.0-3.0 mg of total protein lysate

## Applications

### Tested Applications:

IP, ELISA

### Species Specificity:

human

### Positive Controls:

IP : HL-60 cells,

## Background Information

PHACTR3 was originally named as the nuclear scaffold-associated PP1-inhibiting protein (Scapinin), which is found in the nuclear insoluble fraction of the leukemia cell line HL-60. However, PHACTR3 is distributed to the plasma membrane in adherent cells, and it enhances cell migration (PMID: 25405772). In humans, there are two PHACTR3 isoforms that are 75 kDa and 60 kDa, respectively (PMID: 32423795).

## Storage

### Storage:

Store at -20°C. Stable for one year after shipment.

### Storage Buffer:

PBS with 0.02% sodium azide and 50% glycerol pH 7.3.

Aliquoting is unnecessary for -20°C storage

\*\*\* 20ul sizes contain 0.1% BSA

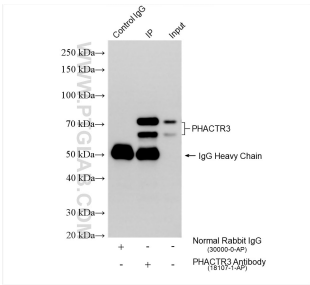
For technical support and original validation data for this product please contact:

T: 1 (888) 4PTGLAB (1-888-478-4522) (toll free in USA), or 1(312) 455-8498 (outside USA)

E: [proteintech@ptglab.com](mailto:proteintech@ptglab.com)  
W: [ptglab.com](http://ptglab.com)

This product is exclusively available under Proteintech Group brand and is not available to purchase from any other manufacturer.

## Selected Validation Data



IP result of anti-PHACTR3 (IP:18107-1-AP, 4ug;  
Detection:18107-1-AP 1:1500) with HL-60 cells  
lysate 2240 ug.