

For Research Use Only

PRPH2 Polyclonal antibody

Catalog Number: 18109-1-AP **15 Publications**



Basic Information

Catalog Number: 18109-1-AP	GenBank Accession Number: BC074720	Purification Method: Antigen affinity purification
Size: 150ul , Concentration: 700 µg/ml by Nanodrop;	GeneID (NCBI): 5961	Recommended Dilutions: WB 1:500-1:2000 IF 1:20-1:200
Source: Rabbit	UNIPROT ID: P23942	
Isotype: IgG	Full Name: peripherin 2 (retinal degeneration, slow)	
Immunogen Catalog Number: AG12555	Calculated MW: 346 aa, 39 kDa	
	Observed MW: 39 kDa	

Applications

Tested Applications: IF, WB, ELISA	Positive Controls: WB : mouse eye tissue, IF : mouse Retina tissue,
Cited Applications: WB, IP, IHC, IF	
Species Specificity: human, mouse, rat	
Cited Species: human, rat, mouse	

Background Information

Peripherin-2 (PRPH2), also known as retinal degeneration slow protein (RDS), is a photoreceptor-specific tetraspanin protein implicated in outer segment disk morphogenesis. It may function as an adhesion molecule involved in stabilization and compaction of outer segment disks or in the maintenance of the curvature of the rim. Mutations in peripherin-2 are responsible for various retinal degenerative diseases including autosomal dominant retinitis pigmentosa (ADRP).

Notable Publications

Author	Pubmed ID	Journal	Application
Poppy Datta	31694913	J Biol Chem	WB, IF
Poppy Datta	33961633	PLoS One	WB, IHC
Nikolaos Mitrousis	32791386	Biomaterials	

Storage

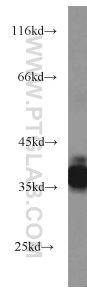
Storage:
Store at -20°C. Stable for one year after shipment.
Storage Buffer:
PBS with 0.02% sodium azide and 50% glycerol pH 7.3.
Aliquoting is unnecessary for -20°C storage

***** 20ul sizes contain 0.1% BSA**

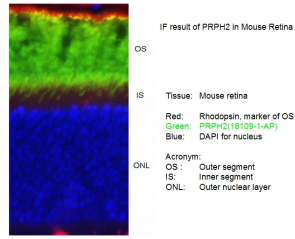
For technical support and original validation data for this product please contact:
T: 1 (888) 4PTGLAB (1-888-478-4522) (toll free in USA), or 1(312) 455-8498 (outside USA)
E: proteintech@ptglab.com
W: ptglab.com

This product is exclusively available under Proteintech Group brand and is not available to purchase from any other manufacturer.

Selected Validation Data



mouse eye tissue were subjected to SDS PAGE followed by western blot with 18109-1-AP (PRPH2 antibody) at dilution of 1:1000 incubated at room temperature for 1.5 hours.



IF result of anti-PRPH2 (18109-1-AP) in Mouse Retina by Dr. Seongjin Seo. OS (Outer segment) Stain.