

For Research Use Only

Synaptotagmin-13 Polyclonal antibody



Catalog Number: 18115-1-AP

1 Publications

Basic Information

Catalog Number: 18115-1-AP	GenBank Accession Number: BC093830	Purification Method: Antigen affinity purification
Size: 150ul , Concentration: 300 µg/ml by Nanodrop and 173 µg/ml by Bradford method using BSA as the standard;	GeneID (NCBI): 57586	Recommended Dilutions: WB 1:500-1:1000
Source: Rabbit	Full Name: synaptotagmin XIII	
Isotype: IgG	Calculated MW: 426 aa, 47 kDa	
Immunogen Catalog Number: AG12599	Observed MW: 47 kDa, 66 kDa	

Applications

Tested Applications: WB,ELISA	Positive Controls: WB : HepG2 cells,
Cited Applications: WB	
Species Specificity: human, mouse, rat	
Cited Species: human	

Background Information

Synaptotagmin-13 is a member of the synaptotagmin family of proteins which are known as membrane trafficking proteins. Synaptotagmin-13 is composed of the canonical domains of synaptotagmins that include an N-terminal transmembrane region, two C-terminal cytoplasmic C2-domains, and a connecting sequence between the transmembrane region and the C2-domains (PMID: 11211934). Synaptotagmin-13 is highly expressed in brain and may be involved in transport vesicle docking to the plasma membrane.

Notable Publications

Author	Pubmed ID	Journal	Application
Federica Rizzo	30649277	Brain	WB

Storage

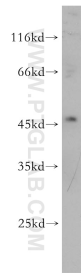
Storage:
Store at -20°C. Stable for one year after shipment.
Storage Buffer:
PBS with 0.02% sodium azide and 50% glycerol pH 7.3.
Aliquoting is unnecessary for -20°C storage

*** 20ul sizes contain 0.1% BSA

For technical support and original validation data for this product please contact:
T: 1 (888) 4PTGLAB (1-888-478-4522) (toll free in USA), or 1(312) 455-8498 (outside USA)
E: proteintech@ptglab.com
W: ptglab.com

This product is exclusively available under Proteintech Group brand and is not available to purchase from any other manufacturer.

Selected Validation Data



HepG2 cells were subjected to SDS PAGE followed by western blot with 18115-1-AP (Synaptotagmin-13 antibody) at dilution of 1:500 incubated at room temperature for 1.5 hours.