

For Research Use Only

PARP15 Polyclonal antibody

Catalog Number: 18126-1-AP



Basic Information

Catalog Number:

18126-1-AP

Size:

150ul , Concentration: 350 ug/ml by Nanodrop and 327 ug/ml by Bradford method using BSA as the standard;

Source:

Rabbit

Isotype:

IgG

Immunogen Catalog Number:

AG12702

GenBank Accession Number:

BC101701

GeneID (NCBI):

165631

UNIPROT ID:

Q460N3

Full Name:

poly (ADP-ribose) polymerase family, member 15

Calculated MW:

444aa, 50 kDa; 656aa, 73 kDa

Observed MW:

50 kDa

Purification Method:

Antigen affinity purification

Recommended Dilutions:

WB 1:500-1:1000

Applications

Tested Applications:

WB, ELISA

Species Specificity:

human

Positive Controls:

WB : A431 cells, A549 cells, HepG2 cells, Jurkat cells, MCF-7 cells

Storage

Storage:

Store at -20°C. Stable for one year after shipment.

Storage Buffer:

PBS with 0.02% sodium azide and 50% glycerol pH 7.3.

Aliquoting is unnecessary for -20°C storage

*** 20ul sizes contain 0.1% BSA

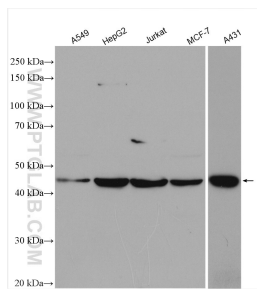
For technical support and original validation data for this product please contact:

T: 1 (888) 4PTGLAB (1-888-478-4522) (toll free in USA), or 1(312) 455-8498 (outside USA)

E: proteintech@ptglab.com
W: ptglab.com

This product is exclusively available under Proteintech Group brand and is not available to purchase from any other manufacturer.

Selected Validation Data



Various lysates were subjected to SDS PAGE followed by western blot with 18126-1-AP (PARP15 antibody) at dilution of 1:500 incubated at room temperature for 1.5 hours.