

For Research Use Only

RAB11FIP2 Polyclonal antibody, PBS Only

Catalog Number: 18136-1-PBS

Featured Product



Basic Information

Catalog Number:

18136-1-PBS

Size:

100ug, Concentration: 1 mg/ml by Nanodrop;

Source:

Rabbit

Isotype:

IgG

Immunogen Catalog Number:

AG12736

GenBank Accession Number:

BC075073

GeneID (NCBI):

22841

UNIPROT ID:

Q7L804

Full Name:

RAB11 family interacting protein 2 (class I)

Calculated MW:

512 aa, 58 kDa

Observed MW:

58 kDa

Purification Method:

Antigen affinity purification

Applications

Tested Applications:

WB, IF/ICC, Indirect ELISA

Species Specificity:

human, mouse, rat

Background Information

RAB11FIP2, or RAB11 family interacting protein 2, is a protein that plays a crucial role in intracellular trafficking, particularly in the recycling of endocytic vesicles. It is involved in several cellular processes, including TRAM-dependent toll-like receptor 4 signaling pathway, phagocytosis, and positive regulation of GTPase activity. RAB11FIP2 is localized in endosomes, nucleoplasm, and phagocytic cups, and it is expressed ubiquitously in various tissues, with higher expression in endometrium and brain. RAB11FIP2 interacts with the actin-based motor myo5b and the small GTPase Rab11, which are key components in the regulation of vesicle tethering and transport along actin filaments. This interaction is particularly important for processes such as cell polarization, motility, and lumen formation in multicellular structures.

Storage

Storage:

Store at -80°C.

Storage Buffer:

PBS only, pH7.3

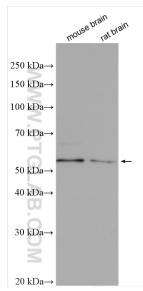
For technical support and original validation data for this product please contact:

T: 1 (888) 4PTGLAB (1-888-478-4522) (toll free in USA), or 1(312) 455-8498 (outside USA)

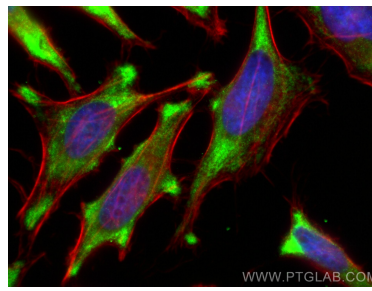
E: proteintech@ptglab.com
W: ptglab.com

This product is exclusively available under Proteintech Group brand and is not available to purchase from any other manufacturer.

Selected Validation Data



Various lysates were subjected to SDS PAGE followed by western blot with 18136-1-AP (RAB11FIP2 antibody) at dilution of 1:6000 incubated at room temperature for 1.5 hours. This data was developed using the same antibody clone with 18136-1-PBS in a different storage buffer formulation.



Immunofluorescent analysis of (-20°C Ethanol) fixed HeLa cells using RAB11FIP2 antibody (18136-1-AP) at dilution of 1:200 and CoraLite® 488-Conjugated Goat Anti-Rabbit IgG(H+L) (SA00013-2), CL594-Phalloidin (red). This data was developed using the same antibody clone with 18136-1-PBS in a different storage buffer formulation.