

For Research Use Only

Importin Alpha 5 Polyclonal antibody

Catalog Number: 18137-1-AP

Featured Product

26 Publications



Basic Information

Catalog Number:

18137-1-AP

Size:

150ul, Concentration: 300 ug/ml by Nanodrop and 173 ug/ml by Bradford method using BSA as the standard;

Source:

Rabbit

Isotype:

IgG

Immunogen Catalog Number:

AG12751

GenBank Accession Number:

BC002374

GeneID (NCBI):

3836

UNIPROT ID:

P52294

Full Name:

karyopherin alpha 1 (importin alpha 5)

Calculated MW:

60 kDa

Observed MW:

60 kDa

Purification Method:

Antigen affinity purification

Recommended Dilutions:

WB 1:500-1:5000

IP 0.5-4.0 ug for 1.0-3.0 mg of total protein lysate

IHC 1:50-1:500

IF/ICC 1:200-1:800

Applications

Tested Applications:

WB, IHC, IF/ICC, IP, ELISA

Cited Applications:

WB, IHC, IF, IP, CoIP

Species Specificity:

human, mouse, rat

Cited Species:

human, mouse, rat, pig

Note-IHC: suggested antigen retrieval with TE buffer pH 9.0; (*) Alternatively, antigen retrieval may be performed with citrate buffer pH 6.0

Positive Controls:

WB : HEK-293 cells, HepG2 cells

IP : HEK-293 cells,

IHC : human testis tissue, human kidney tissue, human placenta tissue, human ovary tissue

IF/ICC : HepG2 cells, MCF-7 cells

Background Information

Importins (alpha and beta) are transport factors that transport proteins into the nucleus. alpha importins function by binding transcription factors at nuclear localization sequences (NLS), and associating with importin beta subunits to translocate through the nuclear pore. Six isoforms of alpha importins have been described in human. Importin alpha 5 is the predominant importin in a adult CNS and is essential for differentiation and viability of neural cells.

Notable Publications

Author	Pubmed ID	Journal	Application
Huanru Wang	31575039	Int J Mol Sci	WB
Hao Zeng	33532181	Acta Pharm Sin B	WB, IF
Youzhou Sang	31488827	Nat Commun	WB

Storage

Storage:

Store at -20°C. Stable for one year after shipment.

Storage Buffer:

PBS with 0.02% sodium azide and 50% glycerol pH 7.3.

Aliquoting is unnecessary for -20°C storage

*** 20ul sizes contain 0.1% BSA

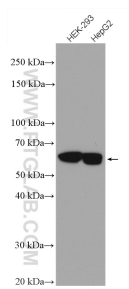
For technical support and original validation data for this product please contact:

T: 1 (888) 4PTGLAB (1-888-478-4522) (toll free in USA), or 1(312) 455-8498 (outside USA)

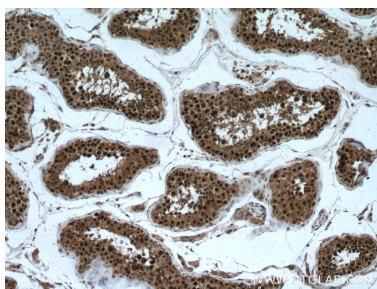
E: proteintech@ptglab.com
W: ptglab.com

This product is exclusively available under Proteintech Group brand and is not available to purchase from any other manufacturer.

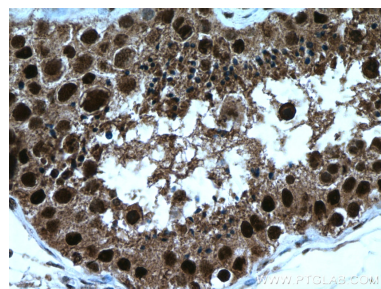
Selected Validation Data



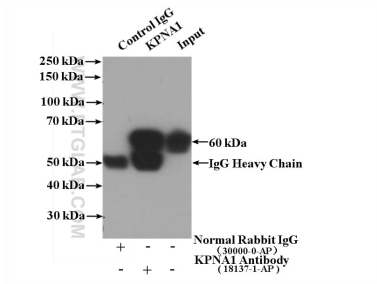
Various lysates were subjected to SDS PAGE followed by western blot with 18137-1-AP (importin α 5 antibody) at dilution of 1:5000 incubated at room temperature for 1.5 hours.



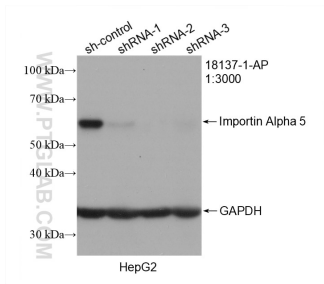
Immunohistochemical analysis of paraffin-embedded human testis tissue slide using 18137-1-AP (importin α 5 antibody) at dilution of 1:200 (under 10x lens. Heat mediated antigen retrieval with Tris-EDTA buffer (pH 9.0).



Immunohistochemical analysis of paraffin-embedded human testis tissue slide using 18137-1-AP (importin α 5 antibody) at dilution of 1:200 (under 40x lens. Heat mediated antigen retrieval with Tris-EDTA buffer (pH 9.0).



IP result of anti-Importin Alpha 5 (IP:18137-1-AP, 4ug; Detection:18137-1-AP 1:1000) with HEK-293 cells lysate 1480ug.



WB result of Importin Alpha 5 antibody (18137-1-AP; 1:3000; incubated at room temperature for 1.5 hours) with sh-Control and sh-Importin Alpha 5 transfected HepG2 cells.

Immunofluorescent analysis of (-20°C Ethanol) fixed HepG2 cells using Importin Alpha 5 antibody (18137-1-AP) at dilution of 1:400 and CoraLite®488-Conjugated Goat Anti-Rabbit IgG(H+L).