

For Research Use Only

ABCD1 Polyclonal antibody

Catalog Number: 18138-1-AP

Featured Product

2 Publications



Basic Information

Catalog Number:

18138-1-AP

Size:

150ul, Concentration: 600 ug/ml by Nanodrop;

Source:

Rabbit

Isotype:

IgG

Immunogen Catalog Number:

AG12757

GenBank Accession Number:

BC025358

GeneID (NCBI):

215

UNIPROT ID:

P33897

Full Name:

ATP-binding cassette, sub-family D (ALD), member 1

Calculated MW:

745 aa, 83 kDa

Observed MW:

75 kDa

Purification Method:

Antigen affinity purification

Recommended Dilutions:

WB 1:500-1:3000

IP 0.5-4.0 ug for 1.0-3.0 mg of total protein lysate

IHC 1:50-1:500

IF/ICC 1:500-1:2000

Applications

Tested Applications:

WB, IHC, IF/ICC, FC (Intra), IP, ELISA

Cited Applications:

WB

Species Specificity:

human

Cited Species:

human

Note-IHC: suggested antigen retrieval with TE buffer pH 9.0; (*) Alternatively, antigen retrieval may be performed with citrate buffer pH 6.0

Positive Controls:

WB : HepG2 cells, HeLa cells

IP : HeLa cells,

IHC : human ovary cancer tissue,

IF/ICC : HeLa cells,

Background Information

ABCD1 (also known as ALDP) is a member of the ATP-binding cassette (ABC) transporter superfamily which functions as transporter for a wide variety of substrates. It localizes to the peroxisomal membrane. The exact function is not clear so far. Various mutations of ABCD1 cause X-linked adrenoleukodystrophy (X-ALD), an inherited neurodegenerative disease affecting the nervous system white matter and adrenal cortex.

Notable Publications

Author	Pubmed ID	Journal	Application
Tatsuo Miyamoto	32368833	EMBO J	WB
Chao Xiong	36810450	Signal Transduct Target Ther	WB

Storage

Storage:

Store at -20°C. Stable for one year after shipment.

Storage Buffer:

PBS with 0.02% sodium azide and 50% glycerol pH 7.3.

Aliquoting is unnecessary for -20°C storage

*** 20ul sizes contain 0.1% BSA

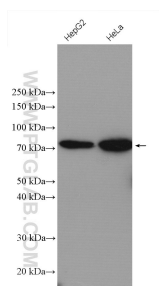
For technical support and original validation data for this product please contact:

T: 1 (888) 4PTGLAB (1-888-478-4522) (toll free in USA), or 1(312) 455-8498 (outside USA)

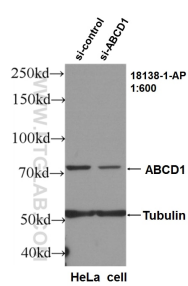
E: proteintech@ptglab.com
W: ptglab.com

This product is exclusively available under Proteintech Group brand and is not available to purchase from any other manufacturer.

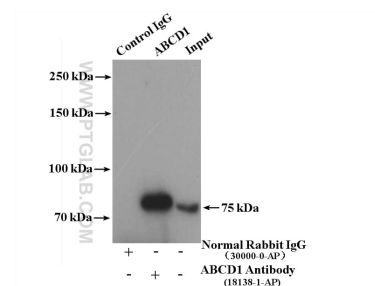
Selected Validation Data



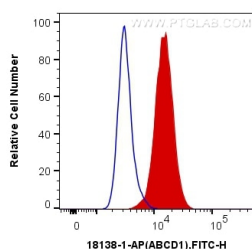
Various lysates were subjected to SDS PAGE followed by western blot with 18138-1-AP (ABCD1 antibody) at dilution of 1:600 incubated at room temperature for 1.5 hours.



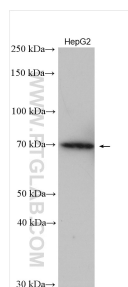
WB result of ABCD1 antibody (18138-1-AP, 1:600) with si-Control and si-ABCD1 transfected HeLa cells..



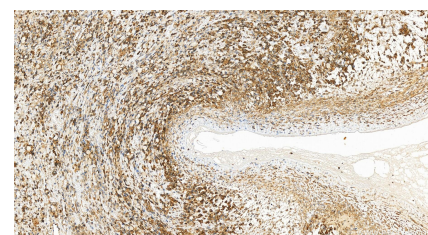
IP result of anti-ABCD1 (IP:18138-1-AP, 4ug; Detection:18138-1-AP 1:700) with HeLa cells lysate 3000 ug.



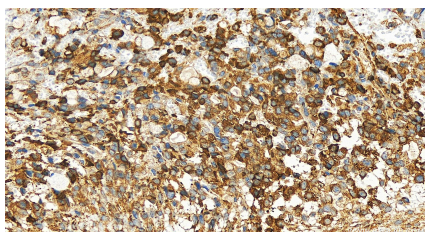
1X10⁶ HeLa cells were intracellularly stained with 0.4 ug Anti-Human ABCD1 (18138-1-AP) and CoraLite®488-Conjugated AffiniPure Goat Anti-Rabbit IgG(H+L) at dilution 1:1000 (red), or 0.4 ug Control Antibody. Cells were fixed with 4% PFA and permeabilized with Flow Cytometry Perm Buffer (PF00011-C).



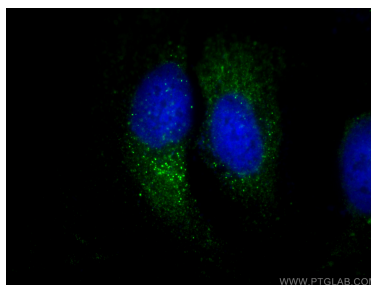
HepG2 cells were subjected to SDS PAGE followed by western blot with 18138-1-AP (ABCD1 antibody) at dilution of 1:1500 incubated at room temperature for 1.5 hours.



Immunohistochemical analysis of paraffin-embedded human ovary cancer tissue slide using 18138-1-AP (ABCD1 antibody) at dilution of 1:200 (under 20x lens). Heat mediated antigen retrieval with Tris-EDTA buffer (pH 9.0).



Immunohistochemical analysis of paraffin-embedded human ovary cancer tissue slide using 18138-1-AP (ABCD1 antibody) at dilution of 1:200 (under 20x lens). Heat mediated antigen retrieval with Tris-EDTA buffer (pH 9.0).



Immunofluorescent analysis of (-20°C Methanol) fixed HeLa cells using ABCD1 antibody (18138-1-AP) at dilution of 1:1000 and Multi-rAb CoraLite® Plus 488-Goat Anti-Rabbit Recombinant Secondary Antibody (H+L) (RGAR002).