

For Research Use Only

# Gastrin Polyclonal antibody

Catalog Number: 18143-1-AP



## Basic Information

Catalog Number:	18143-1-AP	GenBank Accession Number:	BC069724	Purification Method:	Antigen affinity purification
Size:	150ul , Concentration: 550 ug/ml by Nanodrop;	GeneID (NCBI):	2520	Recommended Dilutions:	IHC 1:50-1:500
Source:	Rabbit	UNIPROT ID:	P01350		
Isotype:	IgG	Full Name:	gastrin		
Immunogen Catalog Number:	AG12795	Calculated MW:	101 aa, 11 kDa		

## Applications

Tested Applications:	IHC, ELISA	Positive Controls:	IHC : human stomach tissue,
Species Specificity:	human		
<b>Note-IHC: suggested antigen retrieval with TE buffer pH 9.0; (*) Alternatively, antigen retrieval may be performed with citrate buffer pH 6.0</b>			

## Background Information

Gastrin is a hormone produced primarily by G-cells in the stomach, where it functions to stimulate acid secretion by gastric parietal cells. Gastrin is a promiscuous hormone. Thus, the gastrin gene is expressed in common cancers such as bronchogenic, colorectal, ovarian and pancreatic carcinomas.

## Storage

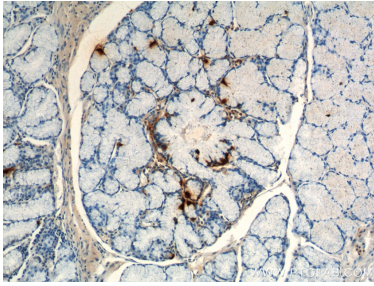
**Storage:**  
Store at -20°C. Stable for one year after shipment.  
**Storage Buffer:**  
PBS with 0.02% sodium azide and 50% glycerol pH 7.3.  
Aliquoting is unnecessary for -20°C storage

\*\*\* 20ul sizes contain 0.1% BSA

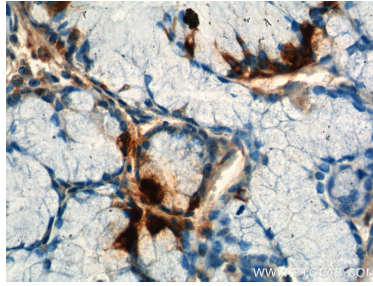
For technical support and original validation data for this product please contact:  
T: 1 (888) 4PTGLAB (1-888-478-4522) (toll free in USA), or 1(312) 455-8498 (outside USA)  
E: [proteintech@ptglab.com](mailto:proteintech@ptglab.com)  
W: [ptglab.com](http://ptglab.com)

This product is exclusively available under Proteintech Group brand and is not available to purchase from any other manufacturer.

## Selected Validation Data



Immunohistochemical analysis of paraffin-embedded human stomach tissue slide using 18143-1-AP (Gastrin antibody at dilution of 1:200 (under 10x lens).



Immunohistochemical analysis of paraffin-embedded human stomach tissue slide using 18143-1-AP (Gastrin antibody at dilution of 1:200 (under 40x lens).