

For Research Use Only

GYPC Polyclonal antibody

Catalog Number: 18147-1-AP

1 Publications



Basic Information

Catalog Number: 18147-1-AP	GenBank Accession Number: BC106051	Purification Method: Antigen affinity purification
Size: 150ul, Concentration: 900 ug/ml by Nanodrop and 407 ug/ml by Bradford method using BSA as the standard;	GeneID (NCBI): 2995	Recommended Dilutions: WB 1:1000-1:4000 IHC 1:500-1:2000 IF-P 1:400-1:1600 IF/ICC 1:50-1:500
Source: Rabbit	UNIPROT ID: P04921	
Isotype: IgG	Full Name: glycophorin C (Gerbich blood group)	
Immunogen Catalog Number: AG12825	Calculated MW: 128 aa, 14 kDa	
	Observed MW: 37 kDa	

Applications

Tested Applications: WB, IHC, IF/ICC, IF-P, ELISA	Positive Controls:
Cited Applications: WB	WB : human blood,
Species Specificity: human	IHC : human placenta tissue, human spleen tissue
Cited Species: human	IF-P : human placenta tissue,
	IF/ICC : K-562 cells,

Note-IHC: suggested antigen retrieval with TE buffer pH 9.0; (*) Alternatively, antigen retrieval may be performed with citrate buffer pH 6.0

Background Information

Glycophorin-C, encoded by the GYPC gene, is a minor sialoglycoprotein in human erythrocyte membranes. Glycophorin-C interacts with protein 4.1R (EPB41) and plays an important role in regulating the mechanical stability of red cells. Glycophorin C acts as the receptor for the Plasmodium falciparum erythrocyte binding ligand PfEBP-2 (baebl). Glycophorin-D, also encoded by the GYPC gene, is now known as a variant of Glycophorin-C. This antibody is raised against the full-length protein of human Glycophorin-C. The apparent molecular weight of Glycophorin-C is larger than the calculated molecular weight due to glycosylation.

Notable Publications

Author	Pubmed ID	Journal	Application
Gayathri Muthukumar	38428433	Mol Cell	WB

Storage

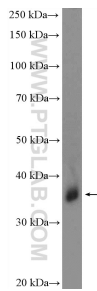
Storage:
Store at -20°C. Stable for one year after shipment.
Storage Buffer:
PBS with 0.02% sodium azide and 50% glycerol pH 7.3.
Aliquoting is unnecessary for -20°C storage

*** 20ul sizes contain 0.1%BSA

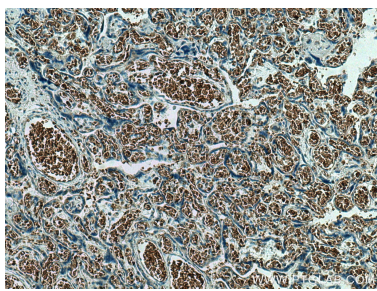
For technical support and original validation data for this product please contact:
T: 1 (888) 4PTGLAB (1-888-478-4522) (toll free in USA), or 1(312) 455-8498 (outside USA)
E: proteintech@ptglab.com
W: ptglab.com

This product is exclusively available under Proteintech Group brand and is not available to purchase from any other manufacturer.

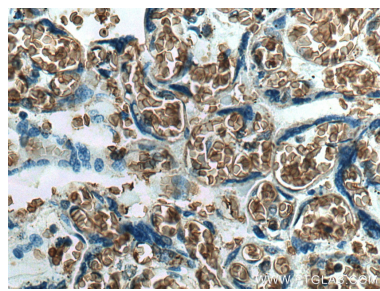
Selected Validation Data



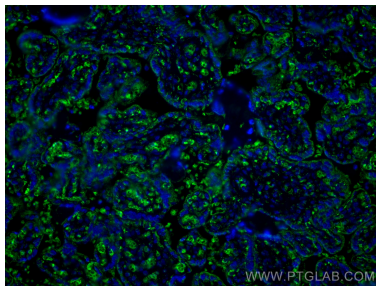
human blood were subjected to SDS PAGE followed by western blot with 18147-1-AP (GYPC antibody) at dilution of 1:2000 incubated at room temperature for 1.5 hours.



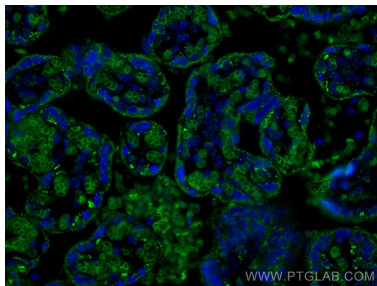
Immunohistochemical analysis of paraffin-embedded human placenta tissue slide using 18147-1-AP (GYPC antibody) at dilution of 1:1000 (under 10x lens). Heat mediated antigen retrieval with Tris-EDTA buffer (pH 9.0).



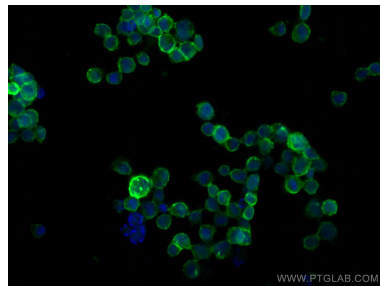
Immunohistochemical analysis of paraffin-embedded human placenta tissue slide using 18147-1-AP (GYPC antibody) at dilution of 1:1000 (under 40x lens). Heat mediated antigen retrieval with Tris-EDTA buffer (pH 9.0).



Immunofluorescent analysis of (4% PFA) fixed human placenta tissue using GYPC antibody (18147-1-AP) at dilution of 1:800 and CoraLite®488-Conjugated AffiniPure Goat Anti-Rabbit IgG(H+L).



Immunofluorescent analysis of (4% PFA) fixed human placenta tissue using GYPC antibody (18147-1-AP) at dilution of 1:800 and CoraLite®488-Conjugated AffiniPure Goat Anti-Rabbit IgG(H+L).



Immunofluorescent analysis of (4% PFA) fixed K-562 cells using GYPC antibody (18147-1-AP) at dilution of 1:200 and CoraLite®488-Conjugated AffiniPure Goat Anti-Rabbit IgG(H+L) (SA00013-2).