

For Research Use Only

PDE6G/H Polyclonal antibody

Catalog Number: 18151-1-AP



Basic Information

Catalog Number:

18151-1-AP

Size:

150ul , Concentration: 550 ug/ml by Nanodrop and 400 ug/ml by Bradford method using BSA as the standard;

Source:

Rabbit

Isotype:

IgG

Immunogen Catalog Number:

AG12847

GenBank Accession Number:

BC093738

GeneID (NCBI):

5149

UNIPROT ID:

Q13956

Full Name:

phosphodiesterase 6H, cGMP-specific, cone, gamma

Calculated MW:

83 aa, 9 kDa

Observed MW:

9 kDa

Purification Method:

Antigen affinity purification

Recommended Dilutions:

WB 1:200-1:1000

IP 0.5-4.0 ug for 1.0-3.0 mg of total protein lysate

Applications

Tested Applications:

WB, IP, ELISA

Species Specificity:

human, mouse, rat

Positive Controls:

WB : mouse eye tissue, rat retina tissue

IP : mouse eye tissue,

Storage

Storage:

Store at -20°C. Stable for one year after shipment.

Storage Buffer:

PBS with 0.02% sodium azide and 50% glycerol pH 7.3.

Aliquoting is unnecessary for -20°C storage

*** 20ul sizes contain 0.1% BSA

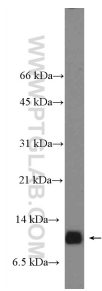
For technical support and original validation data for this product please contact:

T: 1 (888) 4PTGLAB (1-888-478-4522) (toll free in USA), or 1(312) 455-8498 (outside USA)

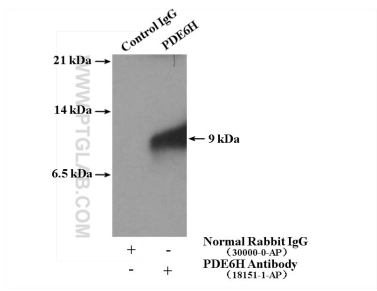
E: proteintech@ptglab.com
W: ptglab.com

This product is exclusively available under Proteintech Group brand and is not available to purchase from any other manufacturer.

Selected Validation Data



mouse eye tissue were subjected to SDS PAGE followed by western blot with 18151-1-AP (PDE6H Antibody) at dilution of 1:300 incubated at room temperature for 1.5 hours.



IP result of anti-PDE6G/H (IP:18151-1-AP, 4ug; Detection:18151-1-AP 1:300) with mouse eye tissue lysate 4000 ug.