

For Research Use Only

# MYL6 Polyclonal antibody, PBS Only

Catalog Number: 18158-1-PBS



## Basic Information

**Catalog Number:**

18158-1-PBS

**Size:**

100ug, Concentration: 1 mg/ml by Nanodrop;

**Source:**

Rabbit

**Isotype:**

IgG

**Immunogen Catalog Number:**

AG12964

**GenBank Accession Number:**

BC006781

**GeneID (NCBI):**

4637

**UNIPROT ID:**

P60660

**Full Name:**

myosin, light chain 6, alkali, smooth muscle and non-muscle

**Calculated MW:**

17 kDa

**Observed MW:**

15-20 kDa

**Purification Method:**

Antigen affinity purification

## Applications

**Tested Applications:**

WB, IHC, IF/ICC, Indirect ELISA

**Species Specificity:**

human, mouse, rat

## Background Information

Myosin is a hexameric ATPase cellular motor protein. It is composed of two heavy chains, two nonphosphorylatable alkali light chains, and two phosphorylatable regulatory light chains. MYL6 (Myosin light polypeptide 6), encodes a myosin alkali light chain that is expressed in smooth muscle and non-muscle tissues. Expression of MYL6 is high in fibroblasts and myoblasts (PMID:8188229, PubMed:2304459, PMID:2722814).

## Storage

**Storage:**

Store at -80°C.

**Storage Buffer:**

PBS Only

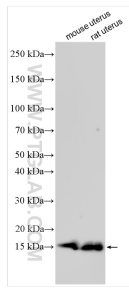
For technical support and original validation data for this product please contact:

T: 1 (888) 4PTGLAB (1-888-478-4522) (toll free in USA), or 1(312) 455-8498 (outside USA)

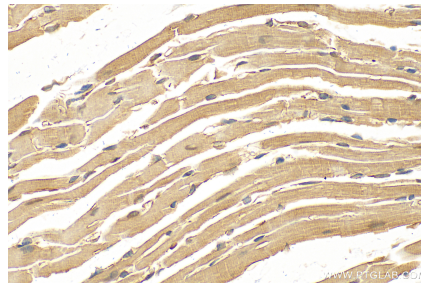
E: [proteintech@ptglab.com](mailto:proteintech@ptglab.com)  
W: [ptglab.com](http://ptglab.com)

**This product is exclusively available under Proteintech Group brand and is not available to purchase from any other manufacturer.**

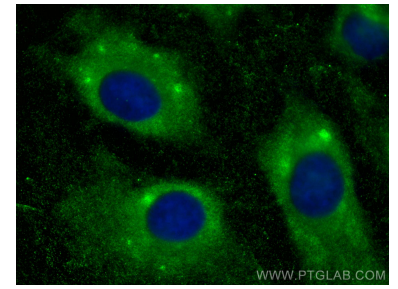
## Selected Validation Data



Various lysates were subjected to SDS PAGE followed by western blot with 18158-1-AP (MYL6 antibody) at dilution of 1:4000 incubated at room temperature for 1.5 hours. This data was developed using the same antibody clone with 18158-1-PBS in a different storage buffer formulation.



Immunohistochemical analysis of paraffin-embedded mouse heart tissue slide using 18158-1-AP (MYL6 antibody) at dilution of 1:400 (under 40x lens). Heat mediated antigen retrieval with Tris-EDTA buffer (pH 9.0). This data was developed using the same antibody clone with 18158-1-PBS in a different storage buffer formulation.



Immunofluorescent analysis of (-20°C Methanol) fixed HeLa cells using MYL6 antibody (18158-1-AP) at dilution of 1:400 and CoraLite®488-Conjugated AffiniPure Goat Anti-Rabbit IgG(H+L). This data was developed using the same antibody clone with 18158-1-PBS in a different storage buffer formulation.