

For Research Use Only

MMP13 Polyclonal antibody, PBS Only

Catalog Number: 18165-1-PBS

Featured Product



Basic Information

Catalog Number:

18165-1-PBS

Size:

100ug, Concentration: 1 mg/ml by Nanodrop;

Source:

Rabbit

Isotype:

IgG

Immunogen Catalog Number:

AG12653

GenBank Accession Number:

BC074808

GeneID (NCBI):

4322

UNIPROT ID:

P45452

Full Name:

matrix metalloproteinase 13

Calculated MW:

471 aa, 54 kDa

Observed MW:

65-70 kDa, 50-55 kDa, 40 kDa

Purification Method:

Antigen affinity purification

Applications

Tested Applications:

WB, IHC, IF/ICC, IP, Indirect ELISA

Species Specificity:

human, mouse, rat

Background Information

MMP-13 (Matrix metalloproteinase-13), cleaves type I collagen and was previously thought to be the rodent analogue of human interstitial MMP-1. MMP-13 is found in hypertrophic and calcifying cartilage of mammalian growth plate. The bands seen with rat MMP-13 are consistent with a 59-kDa latent form and a 43-kDa active form reported for this enzyme, along with a smaller band at approximately 30 kDa (PMID:10771523). It also can be detected 3 bands that the glycosylated proMMP-13 (70 kDa), unglycosylated proform (55 kDa), and active MMP-13 enzyme (40kDa) by western blot (PMID:18332263).

Storage

Storage:

Store at -80°C.

Storage Buffer:

PBS only, pH7.3

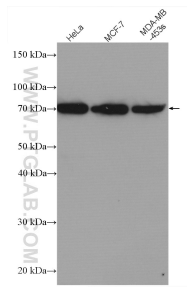
For technical support and original validation data for this product please contact:

T: 1 (888) 4PTGLAB (1-888-478-4522) (toll free in USA), or 1(312) 455-8498 (outside USA)

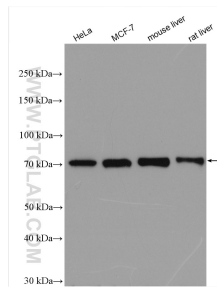
E: proteintech@ptglab.com
W: ptglab.com

This product is exclusively available under Proteintech Group brand and is not available to purchase from any other manufacturer.

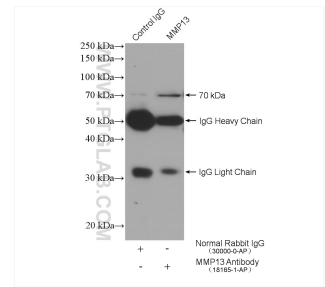
Selected Validation Data



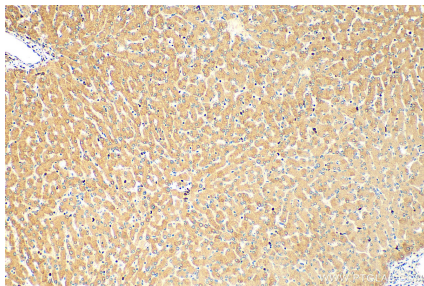
Various lysates were subjected to SDS PAGE followed by western blot with 18165-1-AP (MMP13 antibody) at dilution of 1:500 incubated at room temperature for 1.5 hours. This data was developed using the same antibody clone with 18165-1-PBS in a different storage buffer formulation.



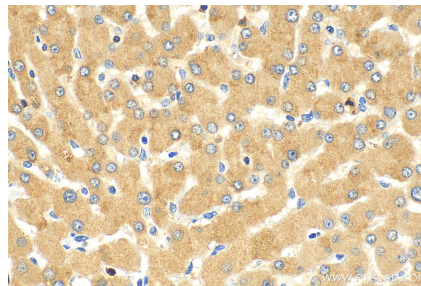
Various lysates were subjected to SDS PAGE followed by western blot with 18165-1-AP (MMP13 antibody) at dilution of 1:2000 incubated at room temperature for 1.5 hours. This data was developed using the same antibody clone with 18165-1-PBS in a different storage buffer formulation.



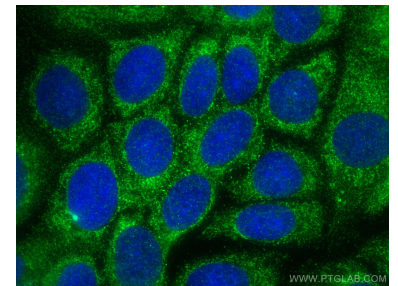
IP result of anti-MMP13 (IP:18165-1-AP, 4ug; Detection:18165-1-AP 1:300) with MCF-7 cells lysate 2480 ug. This data was developed using the same antibody clone with 18165-1-PBS in a different storage buffer formulation.



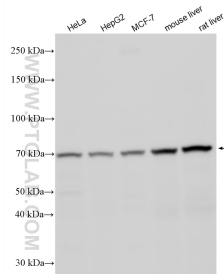
Immunohistochemical analysis of paraffin-embedded human liver tissue slide using 18165-1-AP (MMP13 antibody) at dilution of 1:200 (under 10x lens). Heat mediated antigen retrieval with Tris-EDTA buffer (pH 9.0). This data was developed using the same antibody clone with 18165-1-PBS in a different storage buffer formulation.



Immunohistochemical analysis of paraffin-embedded human liver tissue slide using 18165-1-AP (MMP13 antibody) at dilution of 1:200 (under 40x lens). Heat mediated antigen retrieval with Tris-EDTA buffer (pH 9.0). This data was developed using the same antibody clone with 18165-1-PBS in a different storage buffer formulation.



Immunofluorescent analysis of (-20°C Methanol) fixed MCF-7 cells using MMP13 antibody (18165-1-AP) at dilution of 1:200 and CoraLite®488-Conjugated AffiniPure Goat Anti-Rabbit IgG(H+L). This data was developed using the same antibody clone with 18165-1-PBS in a different storage buffer formulation.



Various lysates were subjected to SDS PAGE followed by western blot with 18165-1-AP (MMP13 antibody) at dilution of 1:2000 incubated at room temperature for 1.5 hours. This data was developed using the same antibody clone with 18165-1-PBS in a different storage buffer formulation.