

For Research Use Only

WISP1 Polyclonal antibody

Catalog Number: 18166-1-AP

Featured Product

8 Publications



Basic Information

Catalog Number: 18166-1-AP	GenBank Accession Number: BC074841	Purification Method: Antigen affinity purification
Size: 150ul , Concentration: 600 µg/ml by Nanodrop;	GeneID (NCBI): 8840	Recommended Dilutions: WB 1:1000-1:4000 IHC 1:50-1:500
Source: Rabbit	Full Name: WNT1 inducible signaling pathway protein 1	
Isotype: IgG	Calculated MW: 367 aa, 40 kDa	
Immunogen Catalog Number: AG12657	Observed MW: 40-45 kDa	

Applications

Tested Applications:

IHC, WB, ELISA

Cited Applications:

IF, IHC, WB

Species Specificity:

human, mouse

Cited Species:

human

Positive Controls:

WB : COLO 320 cells, HEK-293 cells, mouse testis tissue, mouse liver tissue

IHC : human stomach cancer tissue, human small intestine tissue, human lung cancer tissue

Note-IHC: suggested antigen retrieval with TE buffer pH 9.0; (*) Alternatively, antigen retrieval may be performed with citrate buffer pH 6.0

Background Information

WISP1(Wnt-induced secreted protein 1), also known as CCN4, is a secreted, matricellular protein allocated to the CCN protein family. The CCN protein family consists of six, modular structured, secreted proteins (Cyr61, CTGF, Nov, WISP1, WISP2, WISP3). WISP1 may be downstream in the WNT1 signaling pathway that is relevant to malignant transformation. WISP1 is expressed at a high level in fibroblast cells, and overexpressed in colon tumors. Its expression is associated with proliferation, cytoprotection, as well as extracellular matrix production. 18166-1-AP antibody detects the 40-45 kDa protein in SDS-PAGE.

Notable Publications

Author	Pubmed ID	Journal	Application
Jian-Yu Yang	26550461	Am J Transl Res	WB, IHC
Di Jing	28902353	Int J Oncol	
Huihui Ren	36267574	Front Physiol	IHC

Storage

Storage:

Store at -20°C. Stable for one year after shipment.

Storage Buffer:

PBS with 0.02% sodium azide and 50% glycerol pH 7.3.

Aliquoting is unnecessary for -20°C storage

*** 20ul sizes contain 0.1% BSA

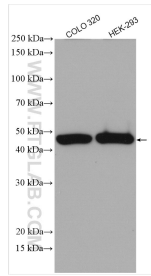
For technical support and original validation data for this product please contact:

T: 1 (888) 4PTGLAB (1-888-478-4522) (toll free in USA), or 1(312) 455-8498 (outside USA)

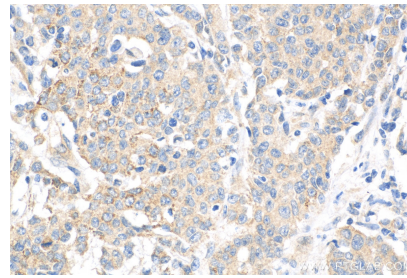
E: proteintech@ptglab.com
W: ptglab.com

This product is exclusively available under Proteintech Group brand and is not available to purchase from any other manufacturer.

Selected Validation Data



Various lysates were subjected to SDS PAGE followed by western blot with 18166-1-AP (WISP1 antibody) at dilution of 1:2000 incubated at room temperature for 1.5 hours.



Immunohistochemical analysis of paraffin-embedded human stomach cancer tissue slide using 18166-1-AP (WISP1 antibody) at dilution of 1:200 (under 40x lens). Heat mediated antigen retrieval with Tris-EDTA buffer (pH 9.0).