

For Research Use Only

# CLEC4G Polyclonal antibody

Catalog Number: 18173-1-AP

1 Publications



## Basic Information

### Catalog Number:

18173-1-AP

### Size:

150ul, Concentration: 350 ug/ml by Nanodrop and 313 ug/ml by Bradford method using BSA as the standard;

### Source:

Rabbit

### Isotype:

IgG

### Immunogen Catalog Number:

AG12837

### GenBank Accession Number:

BC093691

### GeneID (NCBI):

339390

### UNIPROT ID:

Q6UXB4

### Full Name:

C-type lectin domain family 4, member G

### Calculated MW:

293 aa, 33 kDa

### Observed MW:

40 kDa

### Purification Method:

Antigen affinity purification

### Recommended Dilutions:

IHC 1:500-1:2000

IF-P 1:50-1:500

## Applications

### Tested Applications:

IHC, IF-P, ELISA

### Cited Applications:

IF

### Species Specificity:

human

### Cited Species:

mouse

### Positive Controls:

IHC : human liver tissue, human tonsillitis tissue

IF-P : human liver tissue,

**Note-IHC: suggested antigen retrieval with TE buffer pH 9.0; (\*) Alternatively, antigen retrieval may be performed with citrate buffer pH 6.0**

## Background Information

CLEC4G, also known as LSECtin, is a member of the C-type lectin family of glycan-binding receptors that is expressed on sinusoidal endothelial cells in liver and lymph nodes. CLEC4G is a type II transmembrane protein of 40 kDa in size with a single C-type lectin-like domain at the COOH terminus, closest in homology to DC-SIGNR, DC-SIGN, and CD23. CLEC4G has been reported as a receptor for Japanese encephalitis virus (PubMed:24623090), ebolavirus (PubMed:16051304), SARS coronavirus/SARS-CoV (PubMed:16051304), lassa virus and Lymphocytic choriomeningitis virus glycoprotein (PubMed:22156524, PubMed:22673088).

## Notable Publications

| Author      | Pubmed ID | Journal  | Application |
|-------------|-----------|----------|-------------|
| Kiryu K Yap | 38681862  | JHEP Rep | IF          |

## Storage

### Storage:

Store at -20°C. Stable for one year after shipment.

### Storage Buffer:

PBS with 0.02% sodium azide and 50% glycerol pH 7.3.

Aliquoting is unnecessary for -20°C storage

\*\*\* 20ul sizes contain 0.1% BSA

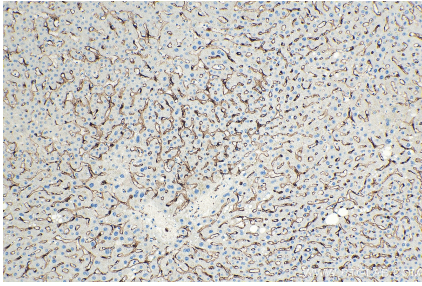
For technical support and original validation data for this product please contact:

T: 1 (888) 4PTGLAB (1-888-478-4522) (toll free in USA), or 1(312) 455-8498 (outside USA)

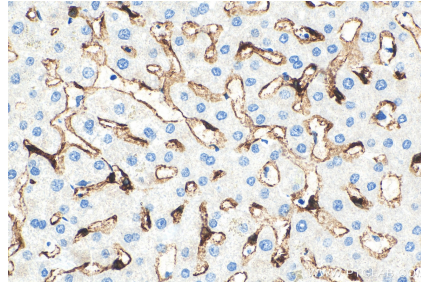
E: [proteintech@ptglab.com](mailto:proteintech@ptglab.com)  
W: [ptglab.com](http://ptglab.com)

This product is exclusively available under Proteintech Group brand and is not available to purchase from any other manufacturer.

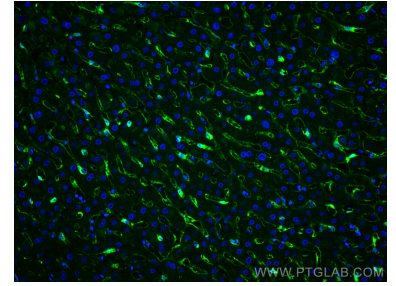
## Selected Validation Data



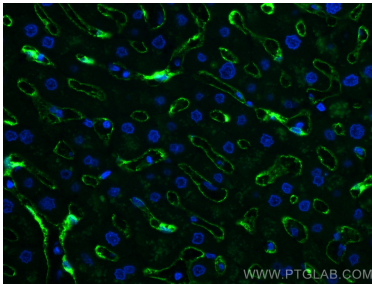
Immunohistochemical analysis of paraffin-embedded human liver tissue slide using 18173-1-AP (CLEC4G antibody) at dilution of 1:1000 (under 10x lens). Heat mediated antigen retrieval with Tris-EDTA buffer (pH 9.0).



Immunohistochemical analysis of paraffin-embedded human liver tissue slide using 18173-1-AP (CLEC4G antibody) at dilution of 1:1000 (under 40x lens). Heat mediated antigen retrieval with Tris-EDTA buffer (pH 9.0).



Immunofluorescent analysis of (4% PFA) fixed human liver tissue using CLEC4G antibody (18173-1-AP) at dilution of 1:200 and CoraLite®488-Conjugated AffiniPure Goat Anti-Rabbit IgG(H+L).



Immunofluorescent analysis of (4% PFA) fixed human liver tissue using CLEC4G antibody (18173-1-AP) at dilution of 1:200 and CoraLite®488-Conjugated AffiniPure Goat Anti-Rabbit IgG(H+L).