

For Research Use Only

HEPACAM Polyclonal antibody

Catalog Number: 18177-1-AP

23 Publications



Basic Information

Catalog Number:

18177-1-AP

Size:

150ul , Concentration: 350 ug/ml by Nanodrop;

Source:

Rabbit

Isotype:

IgG

Immunogen Catalog Number:

AG12870

GenBank Accession Number:

BC104831

GeneID (NCBI):

220296

UNIPROT ID:

Q14CZ8

Full Name:

hepatocyte cell adhesion molecule

Calculated MW:

416 aa, 46 kDa

Observed MW:

46-72 kDa

Purification Method:

Antigen affinity purification

Recommended Dilutions:

WB 1:500-1:1000

IP 0.5-4.0 ug for 1.0-3.0 mg of total protein lysate

IHC 1:20-1:200

IF/ICC 1:10-1:100

Applications

Tested Applications:

WB, IHC, IF/ICC, IP, ELISA

Cited Applications:

WB, IHC, IF, IP

Species Specificity:

human, mouse, rat

Cited Species:

human, mouse, rat

Note-IHC: suggested antigen retrieval with TE buffer pH 9.0; (*) Alternatively, antigen retrieval may be performed with citrate buffer pH 6.0

Positive Controls:

WB : mouse brain tissue, HepG2 cells, MCF-7 cells, mouse liver tissue, rat brain tissue, SH-SY5Y cells

IP : rat brain tissue,

IHC : human liver tissue, rat brain tissue

IF/ICC : MCF-7 cells,

Background Information

HepaCAM (hepatocyte cell adhesion molecule), also known as GlialCAM, is a single-pass type I membrane glycoprotein of 416 amino acids. It displays a typical structure of immunoglobulin (Ig)-like adhesion molecules including two extracellular Ig-like domains, a transmembrane segment, and a cytoplasmic tail. It has been shown that hepaCAM forms a cis-homodimer on the cell surface, and modulates cell-matrix interaction. It is predominantly expressed in the CNS glial cells. Defects in HEPACAM gene are the cause of megalencephalic leukoencephalopathy with subcortical cysts type 2A (MLC2A). HEPACAM has also been suggested as a tumor suppressor gene.

Notable Publications

Author	Pubmed ID	Journal	Application
Ting Li	33024272	Br J Cancer	IHC
Jia Tao	24324362	Int J Med Sci	WB,IF
Long Zhang	23652371	Mol Med Rep	WB

Storage

Storage:

Store at -20°C. Stable for one year after shipment.

Storage Buffer:

PBS with 0.02% sodium azide and 50% glycerol pH 7.3.

Aliquoting is unnecessary for -20°C storage

*** 20ul sizes contain 0.1% BSA

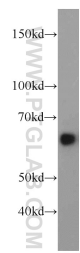
For technical support and original validation data for this product please contact:

T: 1 (888) 4PTGLAB (1-888-478-4522) (toll free in USA), or 1(312) 455-8498 (outside USA)

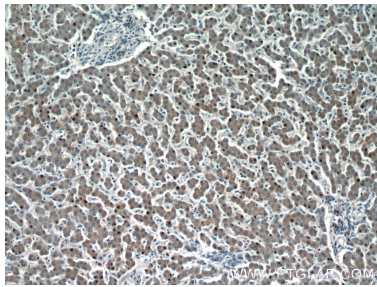
E: proteintech@ptglab.com
W: ptglab.com

This product is exclusively available under Proteintech Group brand and is not available to purchase from any other manufacturer.

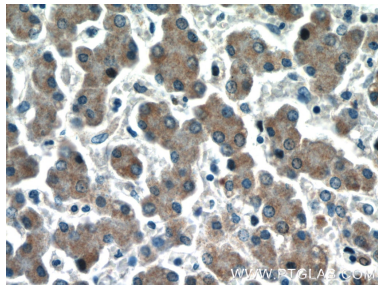
Selected Validation Data



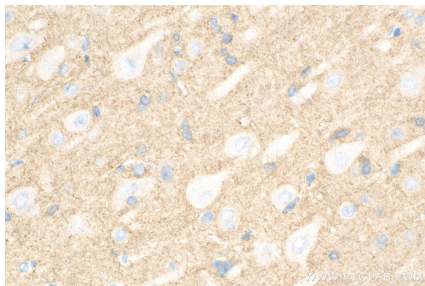
mouse brain tissue were subjected to SDS PAGE followed by western blot with 18177-1-AP (HEPACAM antibody) at dilution of 1:500 incubated at room temperature for 1.5 hours.



Immunohistochemical analysis of paraffin-embedded human liver tissue slide using 18177-1-AP (HEPACAM Antibody) at dilution of 1:50 (under 10x lens).



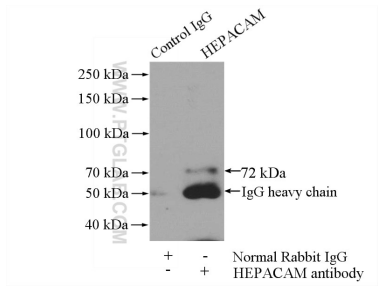
Immunohistochemical analysis of paraffin-embedded human liver tissue slide using 18177-1-AP (HEPACAM Antibody) at dilution of 1:50 (under 40x lens).



Immunohistochemical analysis of paraffin-embedded rat brain tissue slide using 18177-1-AP (HEPACAM antibody) at dilution of 1:200 (under 40x lens). Heat mediated antigen retrieval with Tris-EDTA buffer (pH 9.0).



immunofluorescent analysis of MCF-7 cells, using HEPACAM antibody 18177-1-AP at 1:25 dilution and Rhodamine-labeled goat anti-rabbit IgG (red).Blue pseudocolor = DAPI (fluorescent DNA dye).



IP result of anti-HEPACAM (IP:18177-1-AP, 4ug; Detection:18177-1-AP 1:500) with rat brain tissue lysate 4000ug.