

# SLC28A3 Polyclonal antibody

Catalog Number: 18182-1-AP

## Basic Information

<b>Catalog Number:</b> 18182-1-AP	<b>GenBank Accession Number:</b> BC093821	<b>Purification Method:</b> Antigen affinity purification
<b>Size:</b> 150ul , Concentration: 450 ug/ml by Nanodrop;	<b>GeneID (NCBI):</b> 64078	<b>Recommended Dilutions:</b> WB 1:500-1:1000
<b>Source:</b> Rabbit	<b>UNIPROT ID:</b> Q9HAS3	<b>IHC 1:400-1:1600</b>
<b>Isotype:</b> IgG	<b>Full Name:</b> solute carrier family 28 (sodium-coupled nucleoside transporter), member 3	<b>IF/ICC 1:200-1:800</b>
<b>Immunogen Catalog Number:</b> AG12887	<b>Calculated MW:</b> 691 aa, 77 kDa	
	<b>Observed MW:</b> 70-75 kDa	

## Applications

<b>Tested Applications:</b> WB, IHC, IF/ICC, ELISA	<b>Positive Controls:</b>
<b>Species Specificity:</b> human, mouse	<b>WB :</b> HL-60 cells, mouse kidney tissue, mouse liver tissue
<b>Note-IHC: suggested antigen retrieval with TE buffer pH 9.0; (*) Alternatively, antigen retrieval may be performed with citrate buffer pH 6.0</b>	<b>IHC :</b> human pancreas cancer tissue,
	<b>IF/ICC :</b> HepG2 cells,

## Background Information

SLC28A3 (Solute carrier family 28 member 3), also named CNT3, has sodium-dependent, pyrimidine- and purine-selective (PMID: 11032837, PMID: 15861042, PMID: 16446384, PMID: 17140564, PMID: 21998139). It is involved in the homeostasis of endogenous nucleosides (PMID: 11032837, PMID: 15861042). SLC28A3 is able to transport uridine, gemcitabine, 3'-azido-3'-deoxythymidine (AZT), ribavirin and 3-deazauridine (PMID: 21795683, PMID: 11032837, PMID: 17140564). SLC28A3, the human concentrative nucleoside transporter, plays a role in mediating the cellular entry of a broad array of physiological nucleosides and synthetic anticancer nucleoside analog drugs (PMID: 15738947). Variants in SLC28A3 and UGT1A6 act as genetic markers predictive of anthracycline-induced cardiotoxicity (PMID: 23441093).

## Storage

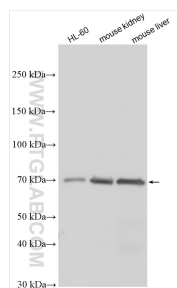
**Storage:**  
Store at -20°C. Stable for one year after shipment.  
**Storage Buffer:**  
PBS with 0.02% sodium azide and 50% glycerol pH 7.3.  
**Aliquoting is unnecessary for -20°C storage**

\*\*\* 20ul sizes contain 0.1% BSA

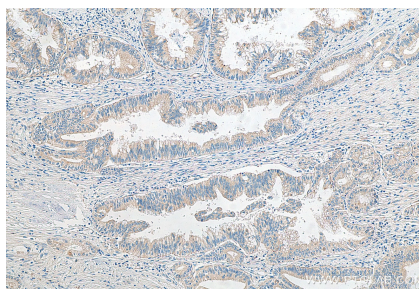
For technical support and original validation data for this product please contact:  
T: 1 (888) 4PTGLAB (1-888-478-4522) (toll free in USA), or 1(312) 455-8498 (outside USA)  
E: [proteintech@ptglab.com](mailto:proteintech@ptglab.com)  
W: [ptglab.com](http://ptglab.com)

This product is exclusively available under Proteintech Group brand and is not available to purchase from any other manufacturer.

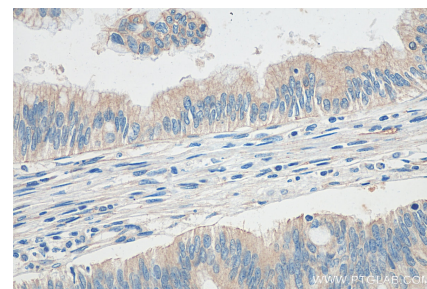
## Selected Validation Data



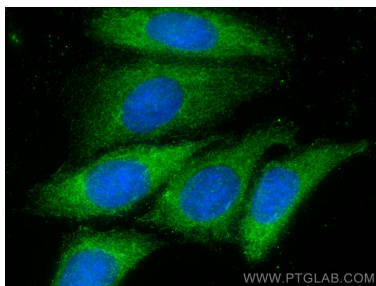
Various lysates were subjected to SDS PAGE followed by western blot with 18182-1-AP (SLC28A3 antibody) at dilution of 1:800 incubated at room temperature for 1.5 hours.



Immunohistochemical analysis of paraffin-embedded human pancreas cancer tissue slide using 18182-1-AP (SLC28A3 antibody) at dilution of 1:800 (under 10x lens). Heat mediated antigen retrieval with Tris-EDTA buffer (pH 9.0).



Immunohistochemical analysis of paraffin-embedded human pancreas cancer tissue slide using 18182-1-AP (SLC28A3 antibody) at dilution of 1:800 (under 40x lens). Heat mediated antigen retrieval with Tris-EDTA buffer (pH 9.0).



Immunofluorescent analysis of (-20°C Methanol) fixed HepG2 cells using SLC28A3 antibody (18182-1-AP) at dilution of 1:400 and CoraLite®488-Conjugated AffiniPure Goat Anti-Rabbit IgG(H+L).