

For Research Use Only

# PAEP/Glycodelin Polyclonal antibody

Catalog Number: 18187-1-AP

1 Publications



## Basic Information

<b>Catalog Number:</b> 18187-1-AP	<b>GenBank Accession Number:</b> BC069562	<b>Purification Method:</b> Antigen affinity purification
<b>Size:</b> 150ul , Concentration: 300 ug/ml by Nanodrop and 233 ug/ml by Bradford method using BSA as the standard;	<b>GeneID (NCBI):</b> 5047	<b>Recommended Dilutions:</b> IHC 1:50-1:500
<b>Source:</b> Rabbit	<b>UNIPROT ID:</b> P09466	
<b>Isotype:</b> IgG	<b>Full Name:</b> progesterone-associated endometrial protein	
<b>Immunogen Catalog Number:</b> AG12902	<b>Calculated MW:</b> 180 aa, 21 kDa	
	<b>Observed MW:</b> 24-28 kDa	

## Applications

<b>Tested Applications:</b> IHC, ELISA	<b>Positive Controls:</b> IHC : human endometrial cancer tissue,
<b>Cited Applications:</b> IHC	
<b>Species Specificity:</b> human	
<b>Cited Species:</b> human	
<b>Note-IHC: suggested antigen retrieval with TE buffer pH 9.0; (*) Alternatively, antigen retrieval may be performed with citrate buffer pH 6.0</b>	

## Background Information

Glycodelin (also known as Progesterone Associated Endometrial Protein, PAEP, and Placental Protein 14, PP14) is a secreted human lipocalin-family protein mainly expressed in well-differentiated epithelial cells in human reproductive tissues, like endometrium and seminal vesicles. While different cells produce differentially glycosylated isoforms of Glycodelin: decidualized endometrium-derived glycodelin-A (GdA), seminal vesicle-derived glycodelin-S (GdS), glycodelin-F (isolated from follicular fluid), and glycodelin-C (isolated from cumulus cells). Glycodelin has been involved in cell differentiation and tumor growth.

## Notable Publications

Author	Pubmed ID	Journal	Application
Qian Hao	34459128	Clin Transl Med	IHC

## Storage

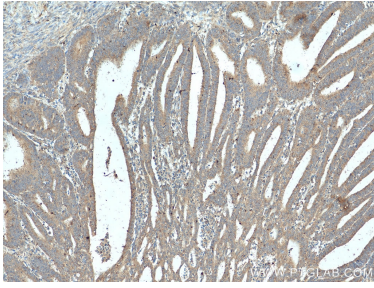
**Storage:**  
Store at -20°C. Stable for one year after shipment.  
**Storage Buffer:**  
PBS with 0.02% sodium azide and 50% glycerol pH 7.3.  
**Aliquoting is unnecessary for -20°C storage**

\*\*\* 20ul sizes contain 0.1% BSA

For technical support and original validation data for this product please contact:  
T: 1 (888) 4PTGLAB (1-888-478-4522) (toll free in USA), or 1(312) 455-8498 (outside USA)  
E: [proteintech@ptglab.com](mailto:proteintech@ptglab.com)  
W: [ptglab.com](http://ptglab.com)

This product is exclusively available under Proteintech Group brand and is not available to purchase from any other manufacturer.

## Selected Validation Data



Immunohistochemical analysis of paraffin-embedded human endometrial cancer tissue slide using 18187-1-AP (PAEP/Glycodelin antibody) at dilution of 1:200 (under 10x lens). Heat mediated antigen retrieval with Tris-EDTA buffer (pH 9.0).