

For Research Use Only

GGTLC2 Polyclonal antibody

Catalog Number: 18191-1-AP



Basic Information

Catalog Number:

18191-1-AP

Size:

150ul, Concentration: 500 µg/ml by Nanodrop;

Source:

Rabbit

Isotype:

IgG

Immunogen Catalog Number:

AG12911

GenBank Accession Number:

BC069534

GeneID (NCBI):

91227

UNIPROT ID:

Q14390

Full Name:

gamma-glutamyltransferase light chain 2

Calculated MW:

218 aa, 24 kDa

Observed MW:

24 kDa

Purification Method:

Antigen affinity purification

Recommended Dilutions:

WB 1:1000-1:6000

Applications

Tested Applications:

WB, ELISA

Species Specificity:

human, mouse

Positive Controls:

WB : 786-O cells, human urine sample, human milk, mouse kidney tissue

Background Information

GGT is a protease anchored to the cell membrane, consisting of a light chain and a heavy chain. GGTLC2 (Glutathione hydrolase light chain 2), also known as GGT4, a constituent of the GGT family, has been characterized as an antioxidant gene, with emerging evidence indicating a potential link between its expression levels and sarcoma patient outcome (PMID: 40191433). Studies have shown that GGTLC2 is highly expressed in gastric cancer, promoting cell proliferation, invasion, and migration while inhibiting apoptosis and ferroptosis.

Storage

Storage:

Store at -20°C. Stable for one year after shipment.

Storage Buffer:

PBS with 0.02% sodium azide and 50% glycerol, pH7.3

Aliquoting is unnecessary for -20°C storage

*** 20ul sizes contain 0.1% BSA

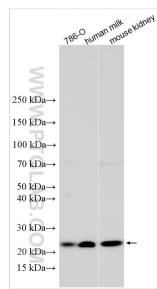
For technical support and original validation data for this product please contact:

T: 1 (888) 4PTGLAB (1-888-478-4522) (toll free in USA), or 1(312) 455-8498 (outside USA)

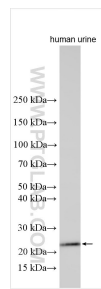
E: proteintech@ptglab.com
W: ptglab.com

This product is exclusively available under Proteintech Group brand and is not available to purchase from any other manufacturer.

Selected Validation Data



Various lysates were subjected to SDS PAGE followed by western blot with 18191-1-AP (GGTLC2 antibody) at dilution of 1:3000 incubated at room temperature for 1.5 hours.



Various lysates were subjected to SDS PAGE followed by western blot with 18191-1-AP (GGTLC2 antibody) at dilution of 1:3000 incubated at room temperature for 1.5 hours.