

For Research Use Only

# GGTLC2 Polyclonal antibody, PBS Only

Catalog Number: 18191-1-PBS



## Basic Information

<b>Catalog Number:</b> 18191-1-PBS	<b>GenBank Accession Number:</b> BC069534	<b>Purification Method:</b> Antigen affinity purification
<b>Size:</b> 100ug, Concentration: 1 mg/ml by Nanodrop;	<b>GeneID (NCBI):</b> 91227	
<b>Source:</b> Rabbit	<b>UNIPROT ID:</b> Q14390	
<b>Isotype:</b> IgG	<b>Full Name:</b> gamma-glutamyltransferase light chain 2	
<b>Immunogen Catalog Number:</b> AG12911	<b>Calculated MW:</b> 218 aa, 24 kDa	
	<b>Observed MW:</b> 24 kDa	

## Applications

**Tested Applications:**  
WB, Indirect ELISA

**Species Specificity:**  
human, mouse

## Background Information

GGT is a protease anchored to the cell membrane, consisting of a light chain and a heavy chain. GGTLC2 (Glutathione hydrolase light chain 2), also known as GGTL4, a constituent of the GGT family, has been characterized as an antioxidant gene, with emerging evidence indicating a potential link between its expression levels and sarcoma patient outcome (PMID: 40191433). Studies have shown that GGTLC2 is highly expressed in gastric cancer, promoting cell proliferation, invasion, and migration while inhibiting apoptosis and ferroptosis.

## Storage

**Storage:**  
Store at -80°C.

**Storage Buffer:**  
PBS only, pH7.3

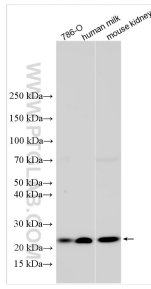
For technical support and original validation data for this product please contact:

T: 1 (888) 4PTGLAB (1-888-478-4522) (toll free in USA), or 1(312) 455-8498 (outside USA)

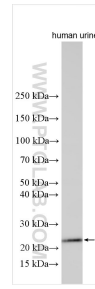
E: [proteintech@ptglab.com](mailto:proteintech@ptglab.com)  
W: [ptglab.com](http://ptglab.com)

**This product is exclusively available under Proteintech Group brand and is not available to purchase from any other manufacturer.**

## Selected Validation Data



Various lysates were subjected to SDS PAGE followed by western blot with 18191-1-AP (GGTLC2 antibody) at dilution of 1:3000 incubated at room temperature for 1.5 hours. This data was developed using the same antibody clone with 18191-1-PBS in a different storage buffer formulation.



Various lysates were subjected to SDS PAGE followed by western blot with 18191-1-AP (GGTLC2 antibody) at dilution of 1:3000 incubated at room temperature for 1.5 hours. This data was developed using the same antibody clone with 18191-1-PBS in a different storage buffer formulation.