

For Research Use Only

LACTB Polyclonal antibody

Catalog Number: 18195-1-AP

Featured Product

8 Publications



Basic Information

Catalog Number: 18195-1-AP	GenBank Accession Number: BC067288	Purification Method: Antigen affinity purification
Size: 150ul , Concentration: 500 µg/ml by Nanodrop and 367 µg/ml by Bradford method using BSA as the standard;	GeneID (NCBI): 114294	Recommended Dilutions: WB 1:1000-1:4000 IHC 1:50-1:500 IF 1:50-1:500
Source: Rabbit	Full Name: lactamase, beta	
Isotype: IgG	Calculated MW: 547 aa, 61 kDa	
Immunogen Catalog Number: AG12233	Observed MW: 50-60 kDa	

Applications

Tested Applications:

IF, IHC, WB, ELISA

Cited Applications:

IF, IHC, WB

Species Specificity:

human

Cited Species:

human, mouse

Note-IHC: suggested antigen retrieval with TE buffer pH 9.0; (*) Alternatively, antigen retrieval may be performed with citrate buffer pH 6.0

Positive Controls:

WB : HepG2 cells, human heart tissue, HeLa cells

IHC : human liver cancer tissue,

IF : HeLa cells,

Background Information

LACTB is also named as MRPL56, which is a component of the large subunit of the mitochondrial ribosome that is encoded by the nuclear genome. LACTB is a mammalian active-site serine protein that has evolved from a bacterial penicillin-binding protein. It promotes intramitochondrial membrane organization and micro-compartmentalization through polymerization (PMID:19858488). Northern blot analysis of mouse tissues detected expression at high levels in liver, heart, and skeletal muscle, with lower levels in kidney, testis, brain, lung, and spleen (PMID:11707067). The full-length of LACTB is about 61kDa, and a 115aa transit peptide can be removed in the mature form. This antibody is specific to LACTB.

Notable Publications

Author	Pubmed ID	Journal	Application
Juan M Gonzalez-Morena	36282364	Apoptosis	WB,IF
Valentina Cutano	36375842	Life Sci Alliance	WB,IHC,IF
Zuzana Keckesova	28329758	Nature	WB,IHC,IF

Storage

Storage:

Store at -20°C. Stable for one year after shipment.

Storage Buffer:

PBS with 0.02% sodium azide and 50% glycerol pH 7.3.

Aliquoting is unnecessary for -20°C storage

*** 20ul sizes contain 0.1% BSA

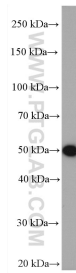
For technical support and original validation data for this product please contact:

T: 1 (888) 4PTGLAB (1-888-478-4522) (toll free in USA), or 1(312) 455-8498 (outside USA)

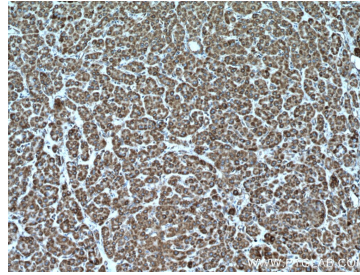
E: proteintech@ptglab.com
W: ptglab.com

This product is exclusively available under Proteintech Group brand and is not available to purchase from any other manufacturer.

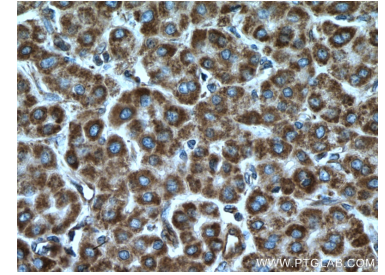
Selected Validation Data



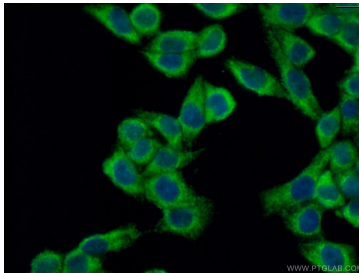
HepG2 cells were subjected to SDS PAGE followed by western blot with 18195-1-AP (LACTB antibody) at dilution of 1:2000 incubated at room temperature for 1.5 hours.



Immunohistochemical analysis of paraffin-embedded human liver cancer tissue slide using 18195-1-AP (LACTB antibody) at dilution of 1:200 (under 10x lens. Heat mediated antigen retrieval with Tris-EDTA buffer (pH 9.0).



Immunohistochemical analysis of paraffin-embedded human liver cancer tissue slide using 18195-1-AP (LACTB antibody) at dilution of 1:200 (under 40x lens. Heat mediated antigen retrieval with Tris-EDTA buffer (pH 9.0).



Immunofluorescent analysis of (4% PFA) fixed HeLa cells using 18195-1-AP (LACTB antibody) at dilution of 1:50 and Alexa Fluor 488-conjugated AffiniPure Goat Anti-Rabbit IgG(H+L).