

PPM1L Polyclonal antibody

Catalog Number: 18203-1-AP

1 Publications

Basic Information

Catalog Number: 18203-1-AP	GenBank Accession Number: BC104885	Purification Method: Antigen affinity purification
Size: 150ul , Concentration: 400 µg/ml by Nanodrop and 287 µg/ml by Bradford method using BSA as the standard;	GeneID (NCBI): 151742	Recommended Dilutions: WB 1:500-1:1000 IHC 1:20-1:200
Source: Rabbit	Full Name: protein phosphatase 1 (formerly 2C)-like	
Isotype: IgG	Calculated MW: 26 kDa, 41 kDa	
Immunogen Catalog Number: AG12775	Observed MW: 41-45 kDa	

Applications

Tested Applications: IHC, WB, ELISA	Positive Controls:
Cited Applications: WB	WB : mouse kidney tissue,
Species Specificity: human, mouse, rat	IHC : human kidney tissue, human heart tissue
Cited Species: human	

Note-IHC: suggested antigen retrieval with TE buffer pH 9.0; (*) Alternatively, antigen retrieval may be performed with citrate buffer pH 6.0

Background Information

PPM1L (Protein phosphatase 1L) is also named as PP2CE. It belongs to the PP2C group of serine/threonine phosphatases, which are distinguished from other phosphatases by their structure, absolute requirement for Mg(2+) or Mn(2+), and insensitivity to okadaic acid. It has 4 isoforms produced by alternative splicing. This antibody is specific to PPM1L.

Notable Publications

Author	Pubmed ID	Journal	Application
Xiaoman Zhu	36096985	Cell Death Dis	WB

Storage

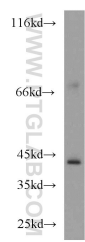
Storage:
Store at -20°C. Stable for one year after shipment.
Storage Buffer:
PBS with 0.02% sodium azide and 50% glycerol pH 7.3.
Aliquoting is unnecessary for -20°C storage

*** 20ul sizes contain 0.1% BSA

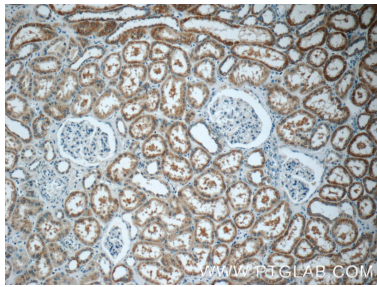
For technical support and original validation data for this product please contact:
T: 1 (888) 4PTGLAB (1-888-478-4522) (toll free in USA), or 1(312) 455-8498 (outside USA)
E: proteintech@ptglab.com
W: ptglab.com

This product is exclusively available under Proteintech Group brand and is not available to purchase from any other manufacturer.

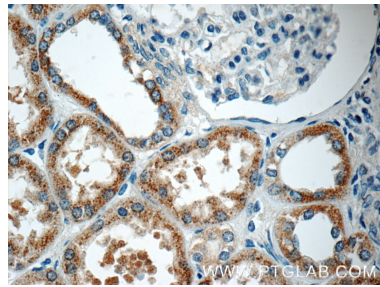
Selected Validation Data



mouse kidney tissue were subjected to SDS PAGE followed by western blot with 18203-1-AP (PPM1L antibody) at dilution of 1:500 incubated at room temperature for 1.5 hours.



Immunohistochemical analysis of paraffin-embedded human kidney tissue slide using 18203-1-AP (PPM1L Antibody) at dilution of 1:50 (under 10x lens).



Immunohistochemical analysis of paraffin-embedded human kidney tissue slide using 18203-1-AP (PPM1L Antibody) at dilution of 1:50 (under 40x lens).