

For Research Use Only

CBLN1 Polyclonal antibody

Catalog Number: 18207-1-AP

Featured Product



Basic Information

Catalog Number:

18207-1-AP

Size:

150ul, Concentration: 500 ug/ml by Nanodrop;

Source:

Rabbit

Isotype:

IgG

Immunogen Catalog Number:

AG12835

GenBank Accession Number:

BC093692

GeneID (NCBI):

869

UNIPROT ID:

P23435

Full Name:

cerebellin 1 precursor

Calculated MW:

193 aa, 21 kDa

Observed MW:

50 kDa

Purification Method:

Antigen affinity purification

Recommended Dilutions:

WB 1:500-1:1000

Applications

Tested Applications:

WB, ELISA

Species Specificity:

human, mouse, rat

Positive Controls:

WB : SH-SY5Y cells, U-87 MG cells, Neuro-2a cells, mouse brain tissue, rat brain tissue

Background Information

CBLN1 (Cerebellin-1) is also named as Precerebellin. CBLN1 is a newly identified synaptic organizer belonging to the C1q family. Cbln1 was recently identified as the missing ligand for the orphan glutamate receptor $\delta 2$ (GluD2) (PMID: 21342763). In the cerebellum, Cbln1 is produced and secreted from granule cells and works as a strong synapse organizer between Purkinje cells and parallel fibers, the axons of the granule cells (PMID: 24607546). The glycosylation modification of CBLN1 resulted in a larger molecular weight.

Storage

Storage:

Store at -20°C. Stable for one year after shipment.

Storage Buffer:

PBS with 0.02% sodium azide and 50% glycerol pH 7.3.

Aliquoting is unnecessary for -20°C storage

*** 20ul sizes contain 0.1% BSA

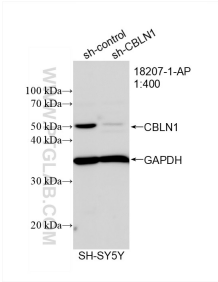
For technical support and original validation data for this product please contact:

T: 1 (888) 4PTGLAB (1-888-478-4522) (toll free in USA), or 1(312) 455-8498 (outside USA)

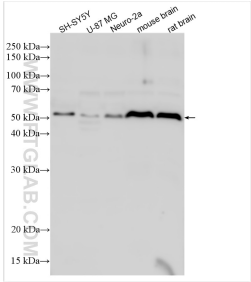
E: proteintech@ptglab.com
W: ptglab.com

This product is exclusively available under Proteintech Group brand and is not available to purchase from any other manufacturer.

Selected Validation Data



WB result of CBLN1 antibody (18207-1-AP; 1:400; incubated at room temperature for 1.5 hours) with sh-Control and sh-CBLN1 transfected SH-SY5Y cells.



Various lysates were subjected to SDS PAGE followed by western blot with 18207-1-AP (CBLN1 antibody) at dilution of 1:500 incubated at room temperature for 1.5 hours.