

For Research Use Only

# DYSFIP1 Polyclonal antibody, PBS Only

Catalog Number: 18208-1-PBS



## Basic Information

<b>Catalog Number:</b> 18208-1-PBS	<b>GenBank Accession Number:</b> BC093707	<b>Purification Method:</b> Antigen affinity purification
<b>Size:</b> 100ug, Concentration: 1 mg/ml by Nanodrop;	<b>GeneID (NCBI):</b> 116729	
<b>Source:</b> Rabbit	<b>UNIPROT ID:</b> Q86WC6	
<b>Isotype:</b> IgG	<b>Full Name:</b> dysferlin interacting protein 1	
<b>Immunogen Catalog Number:</b> AG12839	<b>Calculated MW:</b> 154 aa, 17 kDa	
	<b>Observed MW:</b> 17 kDa	

## Applications

**Tested Applications:**  
WB, IF/ICC, Indirect ELISA

**Species Specificity:**  
human, rat

## Background Information

DYSFIP1 is also known as PPP1R27. DYSFIP1 inhibits phosphatase activity of protein phosphatase 1 (PP1) complexes. The molecular weight of DYSFIP1 is 17 kDa.

## Storage

**Storage:**  
Store at -80°C.

**Storage Buffer:**  
PBS Only

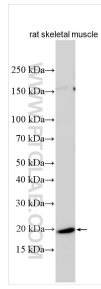
For technical support and original validation data for this product please contact:

T: 1 (888) 4PTGLAB (1-888-478-4522) (toll free  
in USA), or 1(312) 455-8498 (outside USA)

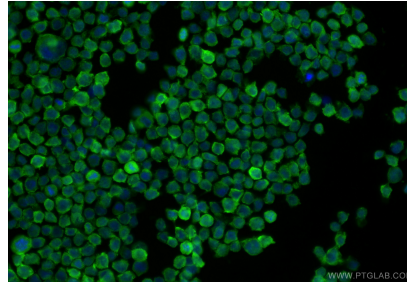
E: [proteintech@ptglab.com](mailto:proteintech@ptglab.com)  
W: [ptglab.com](http://ptglab.com)

**This product is exclusively available under Proteintech Group brand and is not available to purchase from any other manufacturer.**

## Selected Validation Data



Rat skeletal muscle tissue were subjected to SDS PAGE followed by western blot with 18208-1-AP (DYSFIP1 antibody) at dilution of 1:1000 incubated at room temperature for 1.5 hours. This data was developed using the same antibody clone with 18208-1-PBS in a different storage buffer formulation.



Immunofluorescent analysis of (4% PFA) fixed THP-1 cells using DYSFIP1 antibody (18208-1-AP) at dilution of 1:200 and CoraLite® 488-Conjugated Goat Anti-Rabbit IgG(H+L) (SA00013-2). This data was developed using the same antibody clone with 18208-1-PBS in a different storage buffer formulation.