

For Research Use Only

# LSR Polyclonal antibody, PBS Only

Catalog Number: 18216-1-PBS

Featured Product



## Basic Information

**Catalog Number:**

18216-1-PBS

**Size:**

100ug, Concentration: 1 mg/ml by Nanodrop;

**Source:**

Rabbit

**Isotype:**

IgG

**Immunogen Catalog Number:**

AG12961

**GenBank Accession Number:**

BC004381

**GeneID (NCBI):**

51599

**UNIPROT ID:**

Q86X29

**Full Name:**

lipolysis stimulated lipoprotein receptor

**Calculated MW:**

71 kDa

**Observed MW:**

60-70 kDa, 56 kDa

**Purification Method:**

Antigen affinity purification

## Applications

**Tested Applications:**

WB, IHC, Indirect ELISA

**Species Specificity:**

human, mouse, rat

## Background Information

LSR (lipolysis stimulated lipoprotein receptor) is a lipoprotein receptor primarily expressed in the liver and activated by free fatty acids (PMID: 10224102). This remnant receptor binds both apoB- and apoE-containing lipoproteins and displays greatest affinity for TG-rich lipoproteins. Distribution of LSR causes embryonic lethality in mice, indicating that the expression of LSR is critical for liver and embryonic development (PMID: 15265030). Investigations show that LSR is a multimer consisting of a subunit (68 kDa) and  $\beta$  subunit (56 kDa) associated through disulfide bridges (PMID: 10224102; 19188430; 18644789).

## Storage

**Storage:**

Store at -80°C.

**Storage Buffer:**

PBS only, pH7.3

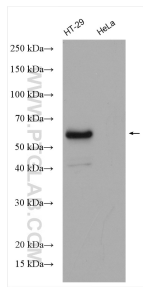
For technical support and original validation data for this product please contact:

T: 1 (888) 4PTGLAB (1-888-478-4522) (toll free in USA), or 1(312) 455-8498 (outside USA)

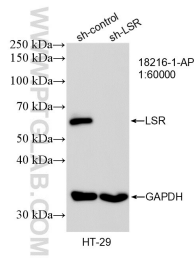
E: [proteintech@ptglab.com](mailto:proteintech@ptglab.com)  
W: [ptglab.com](http://ptglab.com)

This product is exclusively available under Proteintech Group brand and is not available to purchase from any other manufacturer.

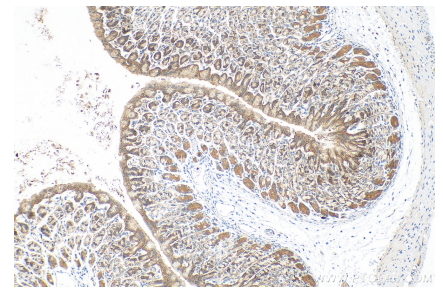
## Selected Validation Data



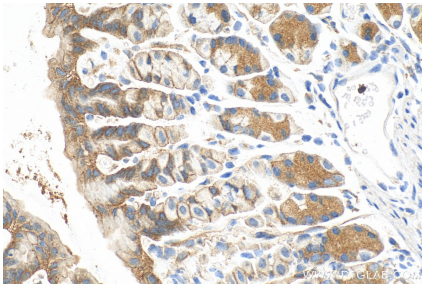
HT-29 cells (LSR+) and HeLa cells (LSR-) were subjected to SDS PAGE followed by western blot with 18216-1-AP (LSR antibody) at dilution of 1:1000 incubated at room temperature for 1.5 hours. This data was developed using the same antibody clone with 18216-1-PBS in a different storage buffer formulation.



WB result of LSR antibody (18216-1-AP; 1:60000; incubated at room temperature for 1.5 hours) with sh-Control and sh-LSR transfected HT-29 cells. This data was developed using the same antibody clone with 18216-1-PBS in a different storage buffer formulation.



Immunohistochemical analysis of paraffin-embedded mouse stomach tissue slide using 18216-1-AP (LSR antibody) at dilution of 1:1000 (under 10x lens). Heat mediated antigen retrieval with Tris-EDTA buffer (pH 9.0). This data was developed using the same antibody clone with 18216-1-PBS in a different storage buffer formulation.



Immunohistochemical analysis of paraffin-embedded mouse stomach tissue slide using 18216-1-AP (LSR antibody) at dilution of 1:1000 (under 40x lens). Heat mediated antigen retrieval with Tris-EDTA buffer (pH 9.0). This data was developed using the same antibody clone with 18216-1-PBS in a different storage buffer formulation.