

For Research Use Only

UBE2S Polyclonal antibody

Catalog Number: 18219-1-AP



Basic Information

Catalog Number: 18219-1-AP	GenBank Accession Number: BC004236	Purification Method: Antigen affinity purification
Size: 150ul , Concentration: 600 ug/ml by Nanodrop and 413 ug/ml by Bradford method using BSA as the standard;	GeneID (NCBI): 27338	Recommended Dilutions: WB 1:500-1:3000 IHC 1:150-1:600
Source: Rabbit	UNIPROT ID: Q16763	
Isotype: IgG	Full Name: ubiquitin-conjugating enzyme E2S	
Immunogen Catalog Number: AG12978	Calculated MW: 24 kDa	
	Observed MW: 28 kDa	

Applications

Tested Applications: WB, IHC, ELISA	Positive Controls:
Species Specificity: human, mouse, rat	WB : HL-60 cells, COLO 320 cells, MCF-7 cells, MDA-MB-453s cells, mouse ovary tissue
Note-IHC: suggested antigen retrieval with TE buffer pH 9.0; (*) Alternatively, antigen retrieval may be performed with citrate buffer pH 6.0	IHC : human skin cancer tissue, human ovary cancer tissue

Background Information

UBE2S(Ubiquitin-conjugating enzyme E2 S) is also named as E2EPF and belongs to the ubiquitin-conjugating enzyme family. It acts as an essential factor of the anaphase promoting complex/cyclosome (APC/C) and a cell cycle-regulated ubiquitin ligase that controls progression through mitosis. Overexpression of UBE2S can increase tumor cell proliferation, invasion, and metastasis through the VHL-HIF pathway (PMID:16819549).

Storage

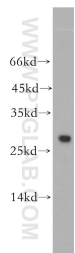
Storage:
Store at -20°C. Stable for one year after shipment.
Storage Buffer:
PBS with 0.02% sodium azide and 50% glycerol pH 7.3.
Aliquoting is unnecessary for -20°C storage

*** 20ul sizes contain 0.1% BSA

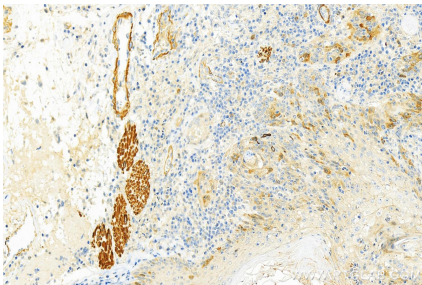
For technical support and original validation data for this product please contact:
T: 1 (888) 4PTGLAB (1-888-478-4522) (toll free in USA), or 1(312) 455-8498 (outside USA)
E: proteintech@ptglab.com
W: ptglab.com

This product is exclusively available under Proteintech Group brand and is not available to purchase from any other manufacturer.

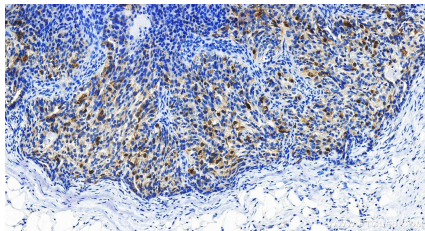
Selected Validation Data



HL-60 cells were subjected to SDS PAGE followed by western blot with 18219-1-AP (UBE2S antibody) at dilution of 1:800 incubated at room temperature for 1.5 hours.



Immunohistochemical analysis of paraffin-embedded skin cancer slide using 18219-1-AP (UBE2S antibody) at dilution of 1:300 (under 20x lens). Heat mediated antigen retrieval with Tris-EDTA buffer (pH 9.0).



Immunohistochemical analysis of paraffin-embedded human ovary cancer tissue slide using 18219-1-AP (UBE2S antibody) at dilution of 1:200 (under 20x lens). Heat mediated antigen retrieval with Tris-EDTA buffer (pH 9.0).